

NEW YORK, NEW YORK

AL-610 (FAA)

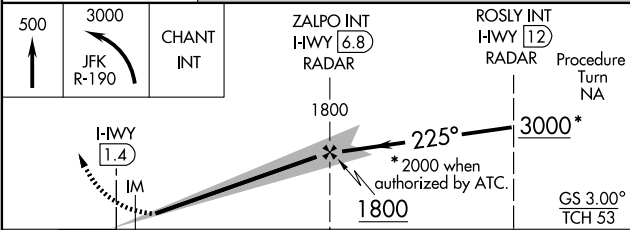
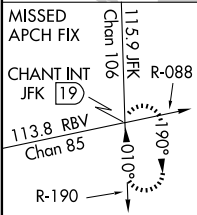
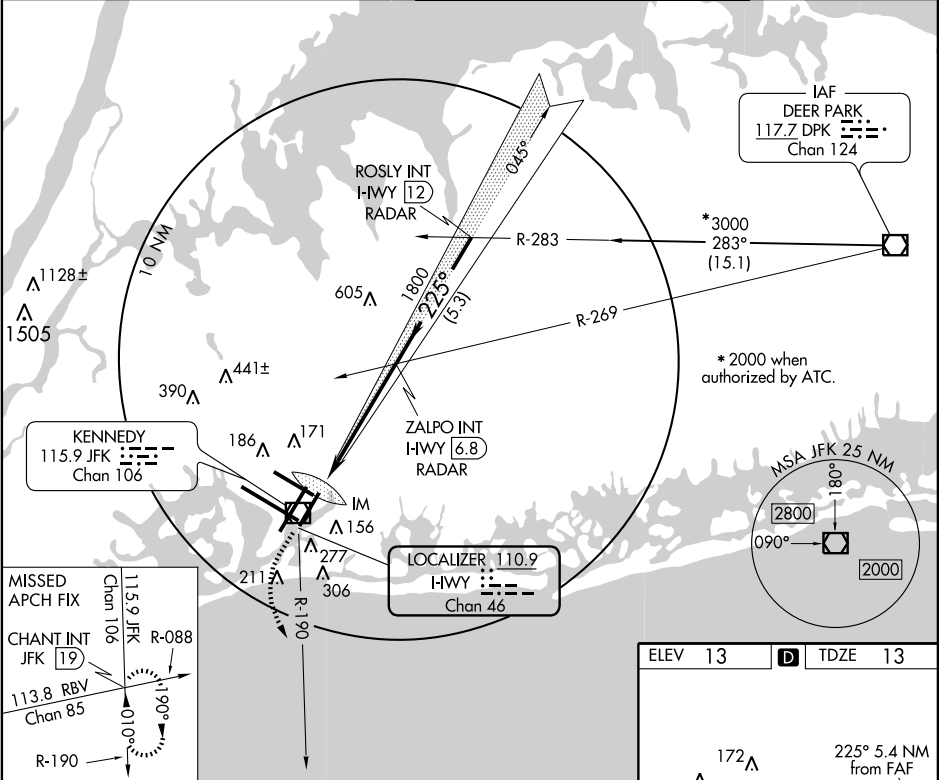
LOC/DME I-HWY	APP CRS	Rwy Idg	8400
110.9	225°	TDZE	13
Chan 46		Apt Elev	13

ILS or LOC RWY 22L

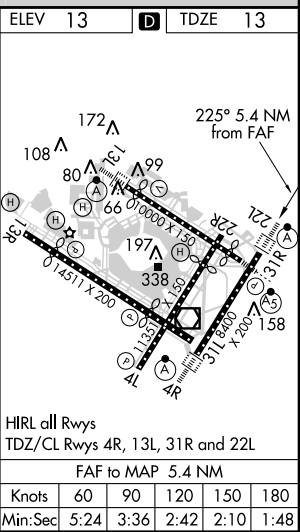
NEW YORK / JOHN F. KENNEDY INTL (JFK)

ALS-F-2	MISSED APPROACH: Climb to 500 then climbing left turn to 3000 via JFK R-190 to CHANT INT/19 DME and hold.
----------------	---

ATIS (ARR-NE) (ARR-SW)			NEW YORK APP CON		KENNEDY TOWER		GND CON	CLNC DEL
128.725	117.7	115.4	127.4	269.0	Rwys 4R/22L and 13L/31R	119.1 281.55	121.9	135.05
					Rwys 4L/22R and 13R/31L	123.9 281.55	348.6	348.6



CATEGORY	A	B	C	D
S-ILS 22L	213/18	200 (200-1/2)		
S-LOC 22L	460/24 447 (500-1/2)	460/40 447 (500-3/4)	460/50 447 (500-1)	
CIRCLING	640-1 627 (700-1)	640-1 3/4 627 (700-1 3/4)	640-2 627 (700-2)	



NEW YORK, NEW YORK
Amdt 24A 11069

NEW YORK / JOHN F. KENNEDY INTL (JFK)
40°38'N - 73°47'W

ILS or LOC RWY 22L

NE-2, 28 JUL 2011 to 25 AUG 2011