

RNAV (GPS) Y RWY 22L
JOHN F KENNEDY INTL (JFK)

JOHN F KENNEDY INTL (JFK)

MISSED APPROACH: Climb to 3000 direct FOLER and via 189° track to CHANT and hold.

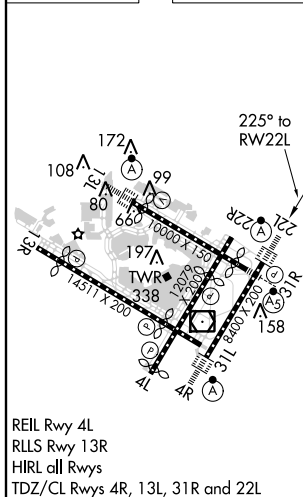
Procedure NA for arrivals at DPK VOR/DME via V1-16 eastbound.

25 NM MSA RW22L

2900

CHANT 192° 012° 5 NM

ELEV 13 D TDZE 13



3000 		FOLER 		tr 189°		CHANT 		VGS1 and RNAV glidepath not coincident (VGS1 Angle 3.00/TCH 66).	
*LNAV only		*1.5 NM to RW22L		ZALPO		225°		NAYIK 2000	
		1.5		3.9 NM		6 NM		Procedure Turn NA GP 3.00° TCH 53	
CATEGORY		A		B		C		D	
LPV DA				270/24		257 (300-½)			
LNAV/ VNAV		DA		420/50		407 (500-1)			
LNAV MDA		560/24		547 (600-½)		560/50 547 (600-1)		560/60 547 (600-1¼)	
CIRCLING		640-1		627 (700-1)		640-1¼ 627 (700-¾)		640-2 627 (700-2)	