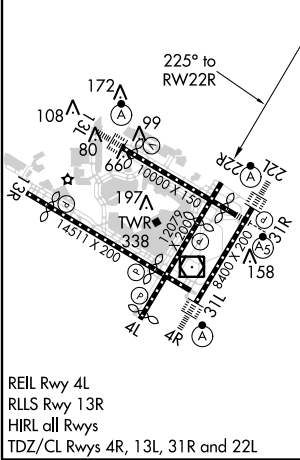
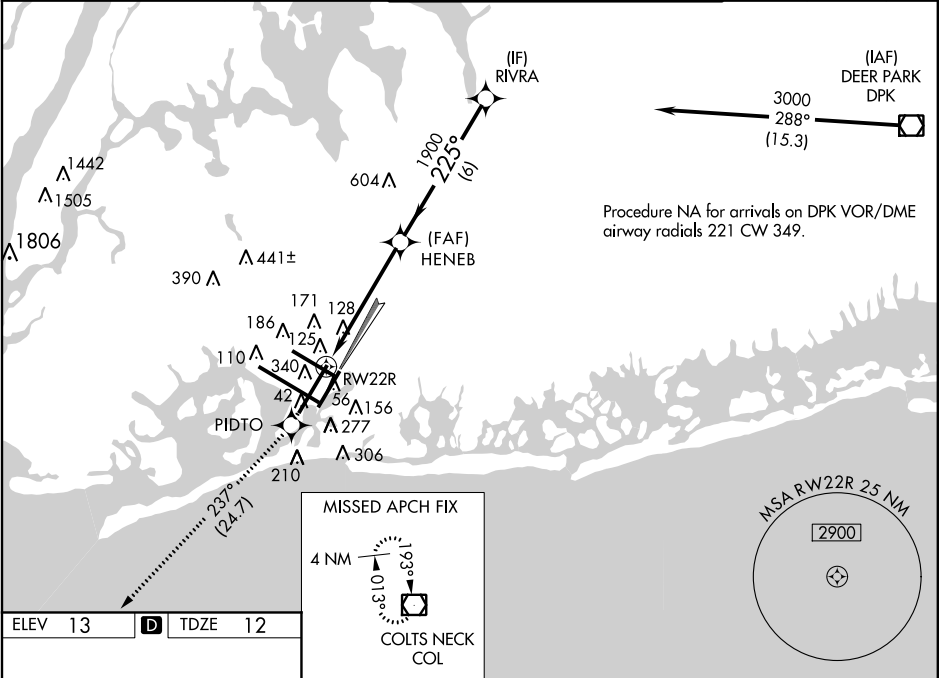


WAAS CH 40019 W22B	APP CRS 225°	Rwy ldg 7795 TDZE 12 Apt Elev 13
--	------------------------	---

RNAV (GPS) RWY 22R
JOHN F KENNEDY INTL (JFK)

<p>▼ For uncompensated Baro-VNAV systems, LNAV/VNAV NA below -12°C (11°F) or above 54°C (130°F). DME/DME RNP-0.3 NA. Simultaneous approach authorized. LNAV procedure NA during simultaneous operations. Use of FD or AP providing RNAV track guidance required during simultaneous operations.</p>	<p>MISSED APPROACH: Climb to 4000 direct PIDTO and on track 237° to COL VOR/DME and hold.</p>
--	--

ATIS (ARR-NE) (ARR-SW)	NEW YORK APP CON	KENNEDY TOWER Rwys 4R/22L and 13L/31R Rwys 4L/22R and 13R/31L	GND CON	CLNC DEL	CPDLC
128.725 117.7 115.4	128.12 269.0	119.1 281.55 123.9 281.55	121.9 348.6	135.05 348.6	



4000	PIDTO	COL	RWY 22R	HENEB	RIVRA
↑	✱	✱	✱	✱	✱
<p>*LNAV only.</p>					
<p>1.7 NM to RWY 22R</p>					
<p>1.7 NM 4 NM 6 NM</p>					
CATEGORY	A	B	C	D	
LPV DA	269/40	257 (300-¾)			
LNAV/VNAV DA	501-1½	489 (500-1½)			
LNAV MDA	600/50	588 (600-1)	600-1¾	588 (600-1¾)	
CIRCLING	640-1	627 (700-1)	640-1¾	660-2	647 (700-2)

NE-2, 21 JUL 2016 to 18 AUG 2016

NE-2, 21 JUL 2016 to 18 AUG 2016