

PARCH TWO ARRIVAL (RNAV)

ST-610 (FAA)

NEW YORK, NEW YORK

NE-2, 21 JUL 2016 to 18 AUG 2016

NEW YORK APP CON
128.12 269.0
KENNEDY INTL ATIS 128.725
(NE) 117.7
(SW) 115.4

ARRIVAL ROUTE DESCRIPTION

KENNEBUNK TRANSITION (ENE.PARCH2):
PLYMM TRANSITION (PLYMM.PARCH2):
SANDY POINT TRANSITION (SEY.PARCH2):

From PARCH via 266° track to CCC VOR/DME. Then via 230° track to ROBER. Thence....

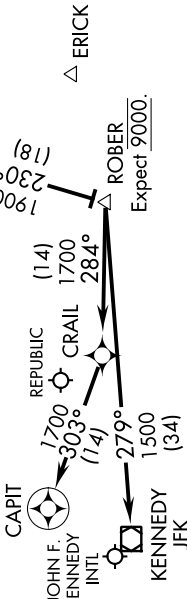
LDG Rwy 4R/L, Rwy 13R/L, Rwy 31R/L: From ROBER via 279° track to JFK VOR/DME, expect radar vectors to final approach course.

LDG Rwy 22R/L: From ROBER via 284° track to CRAIL. Then via 303° track to CAPIT, expect radar vectors to final approach course.

LDG Republic (FRG) Airport: Approaching ROBER expect radar vectors to final approach course.

CALVERTON
CCC

Expect 12000 and 250K.



NOTE: Chart not to scale.

NOTE: Procedure applicable to Turbojet aircraft only.
NOTE: Use caution - Parachute jump activity Southeast of CCC VOR/DME at and below 13500' (SR-SS).
NOTE: RADAR Required.
NOTE: RNAV 1.
NOTE: DME/DME/IRU or GPS Required.

NE-2, 21 JUL 2016 to 18 AUG 2016

PARCH TWO ARRIVAL (RNAV)

NEW YORK, NEW YORK