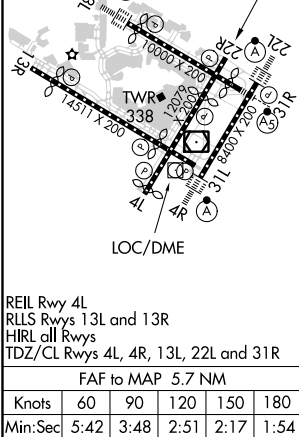
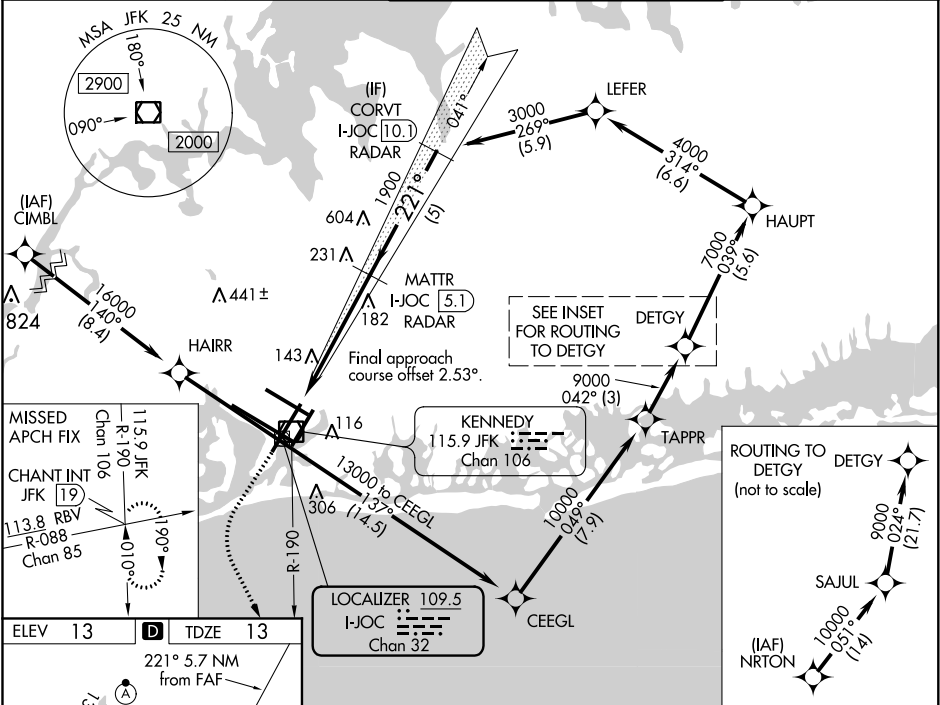


LOC/DME I-JOC 109.5 Chan 32	APP CRS 221°	Rwy Idg TDZE 13 Apt Elev 13
---	------------------------	---

ILS or LOC RWY 22R
JOHN F KENNEDY INTL (JFK)

RNAV 1-GPS or RADAR required for procedure entry. From CIMBL, NRTON: RNAV 1-GPS required. DME or RADAR required.		MISSED APPROACH: Climb to 2000 then climbing left turn to 4000 on JFK VOR/DME R-190 to CHANT INT and hold.
Simultaneous approach authorized.		

D-ATIS (ARR/DEP) (ARR-NE) (ARR-SW)	NEW YORK APP CON	KENNEDY TOWER Rwys 4R/22L and 13L/31R	GND CON	CLNC DEL	CPDLC
128.725 117.7 115.4	128.125 269.0	119.1 281.55 123.9 281.55	121.9 348.6	135.05 348.6	



2000 4000 JFK R-190 CHANT INT		MATTR I-JOC [5.1] RADAR		CORVT I-JOC [10.1] RADAR	
VGSI and ILS glidepath not coincident (VGSI Angle 3.00°/TCH 77°).		1900 221° 3000		GS 3.00° TCH 59°	
5.7 NM		5 NM			
CATEGORY	A		B		D
S-ILS 22R	263/40		250 (300-3/4)		
S-LOC 22R	460/55		447 (500-1)		460-1 3/8 447 (500-1 3/8)
CIRCLING	640-1 627 (700-1)		680-1 3/4 667 (700-1 3/4)		680-2 667 (700-2)

NE-2, 16 JUL 2020 to 13 AUG 2020

NE-2, 16 JUL 2020 to 13 AUG 2020