

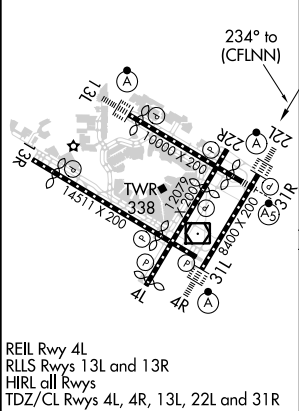
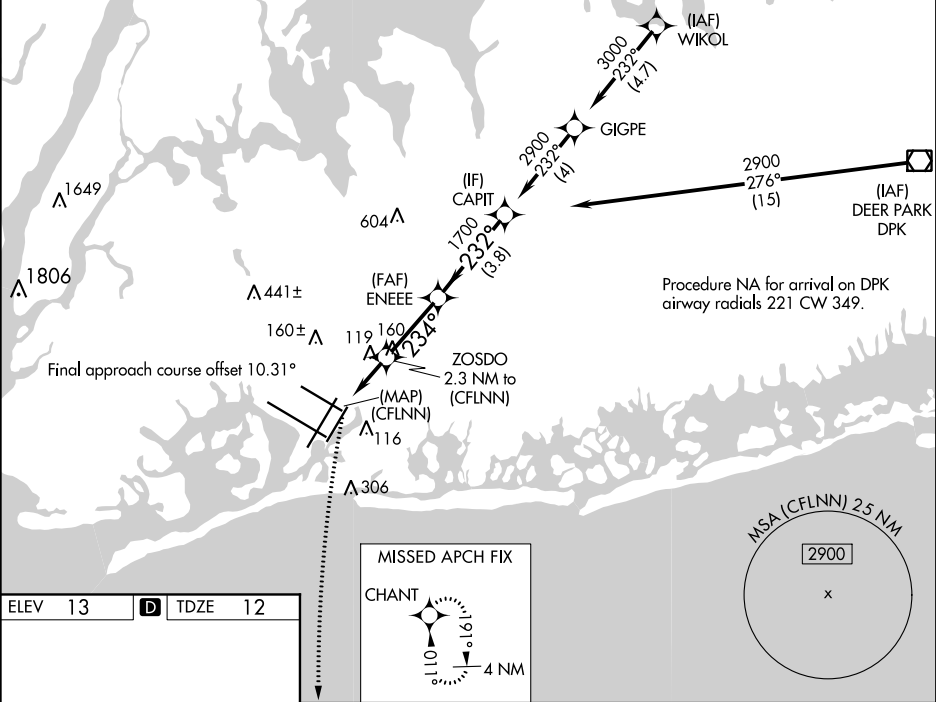
APP CRS	Rwy Idg	8400
234°	TDZE	12
	Apt Elev	13

RNAV (GPS) X RWY 22L

JOHN F KENNEDY INTL (JFK)

RNP APCH - GPS.	ALSF-2	MISSED APPROACH: Climbing left turn to 3000 direct CHANT and hold.
<div>For uncompensated Baro-VNAV systems, LNAV/VNAV NA below -14°C or above 54°C. For inop ALS, increase LNAV/VNAV all Cats visibility to RVR 6000.</div>	<div></div>	

D-ATIS (ARR/DEP) (ARR-NE) (ARR-SW)	NEW YORK APP CON	KENNEDY TOWER	GND CON	CLNC DEL	CPDLC
128.725 117.7 115.4	128.125 269.0	Rwys 4R/22L and 13L/31R 119.1 281.55 Rwys 4L/22R and 13R/31L 123.9 281.55	121.9 348.6	135.05 348.6	



3000	CHANT	VGSI and RNAV glidepath not coincident (VGSI Angle 3.00°/TCH 66).			