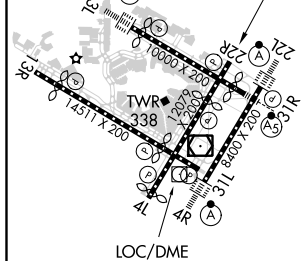
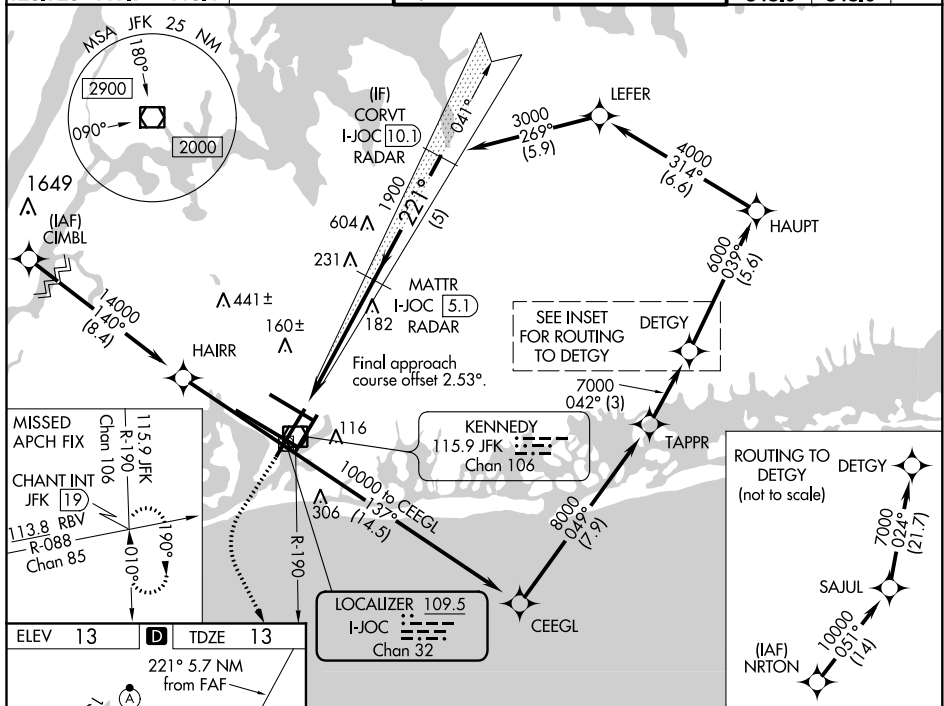


ILS or LOC RWY 22R
JOHN F KENNEDY INTL (JFK)

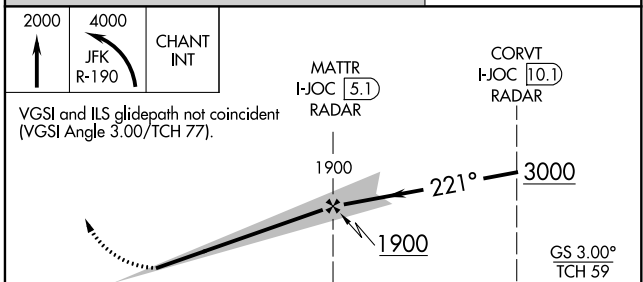
MISSED APPROACH: Climb to 2000 then climbing left turn to 4000 on JFK VOR/DME R-190 to CHANT INT and hold.


Simultaneous approach authorized.

D-ATIS			KENNEDY TOWER			GND CON	CLNC DEL	CPDLC
(ARR/DEP)	(ARR-NE)	(ARR-SW)	Rwys 4R/22L and 13L/31R	Rwys 4L/22R and 13R/31L				
128.725	117.7	115.4	128.125	269.0	119.1	281.55	121.9	135.05
					123.9	281.55	348.6	348.6



REIL Rwy 4L					
RLLS Rwy 13L and 13R					
HIRL all Rwy's					
TDZ/CL Rwy's 4L, 4R, 13L, 22L and 31R					
FAF to MAP 5.7 NM					
Knots	60	90	120	150	180
Min:Sec	5:42	3:48	2:51	2:17	1:54



	5.7 NM		5 NM			
CATEGORY	A		B		C	D
S-ILS 22R	263/40 250 (300-¾)					
S-LOC 22R	460/55 447 (500-1)		460-1⅜		447 (500-1⅜)	
 CIRCLING	640-1 627 (700-1)		680-1¼ 667 (700-1¼)		680-2 667 (700-2)	

NE-2, 15 JUL 2021 to 12 AUG 2021

NE-2. 15 JUL 2021 to 12 AUG 2021