

WAAS CH 97318 W22A	APP CRS 224°	Rwy Idg TDZE Apt Elev	8400 12 13
--	------------------------	-----------------------------	---------------------------------------

RNAV (GPS) Y RWY 22L

JOHN F KENNEDY INTL (JFK)

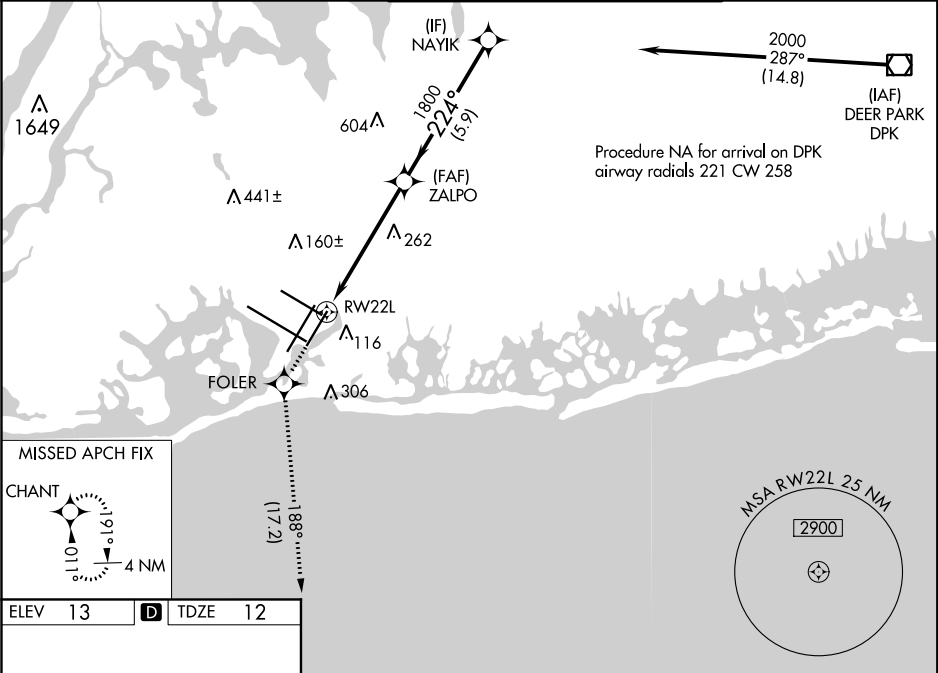
RNP APCH.

Simultaneous approach authorized. LNAV procedure NA during simultaneous operations. Use of FD or AP providing RNAV track guidance required during simultaneous operations. For uncompensated Baro-VNAV systems, LNAV/VNAV NA below -12°C or above 54°C. For inop ALS, increase LNAV/VNAV all Cats visibility to RVR 6000.

ALS F-2

MISSED APPROACH: Climb to 3000 direct FOLER and on track 188° to CHANT and hold.

D-ATIS (ARR/DEP) (ARR-NE) (ARR-SW)			NEW YORK APP CON		KENNEDY TOWER		GND CON	CLNC DEL	CPDLC
128.725 117.7 115.4			128.125 269.0		Rwys 4R/22L and 13L/31R 119.1 281.55 Rwys 4L/22R and 13R/31L 123.9 281.55		121.9 348.6	135.05 348.6	



3000

FOLDR

tr 188°

CHANT

VGSI and RNAV glidepath not coincident (VGSI Angle 3.00/TCH 66).

*LNAV only.

*1.5 NM to RWY22L

RWY22L

ZALPO

NAYIK

GP 3.00° TCH 53

CATEGORY	A	B	C	D
LPV DA	269/18 257 (300-½)			
LNAV/VNAV DA	419/50 407 (500-1)			
LNAV MDA	560/24 548 (600-½)		560/60 548 (600-1¼)	
CIRCLING	640-1 627 (700-1)		680-1¾ 667 (700-1¾)	680-2 667 (700-2)

3000

FOLDR

tr 188°

CHANT

VGSI and RNAV glidepath not coincident (VGSI Angle 3.00/TCH 66).

*LNAV only.

*1.5 NM to RWY22L

RWY22L

ZALPO

NAYIK

GP 3.00° TCH 53

CATEGORY	A	B	C	D
LPV DA	269/18 257 (300-½)			
LNAV/VNAV DA	419/50 407 (500-1)			
LNAV MDA	560/24 548 (600-½)		560/60 548 (600-1¼)	
CIRCLING	640-1 627 (700-1)		680-1¾ 667 (700-1¾)	680-2 667 (700-2)

3000

FOLDR

tr 188°

CHANT

VGSI and RNAV glidepath not coincident (VGSI Angle 3.00/TCH 66).

*LNAV only.

*1.5 NM to RWY22L

RWY22L

ZALPO

NAYIK

GP 3.00° TCH 53

CATEGORY	A	B	C	D
LPV DA	269/18 257 (300-½)			
LNAV/VNAV DA	419/50 407 (500-1)			
LNAV MDA	560/24 548 (600-½)		560/60 548 (600-1¼)	
CIRCLING	640-1 627 (700-1)		680-1¾ 667 (700-1¾)	680-2 667 (700-2)

3000

FOLDR

tr 188°

CHANT

VGSI and RNAV glidepath not coincident (VGSI Angle 3.00/TCH 66).

*LNAV only.

*1.5 NM to RWY22L

RWY22L

ZALPO

NAYIK

GP 3.00° TCH 53

CATEGORY	A	B	C	D
LPV DA	269/18 257 (300-½)			
LNAV/VNAV DA	419/50 407 (500-1)			
LNAV MDA	560/24 548 (600-½)		560/60 548 (600-1¼)	
CIRCLING	640-1 627 (700-1)		680-1¾ 667 (700-1¾)	680-2 667 (700-2)