

LOC/DME F-JOC 109.5 Chan 32	APP CRS 221°	Rwy Idg 7795 TDZE 13 Apt Elev 13
---	------------------------	---

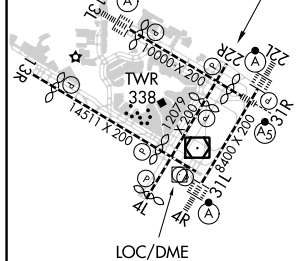
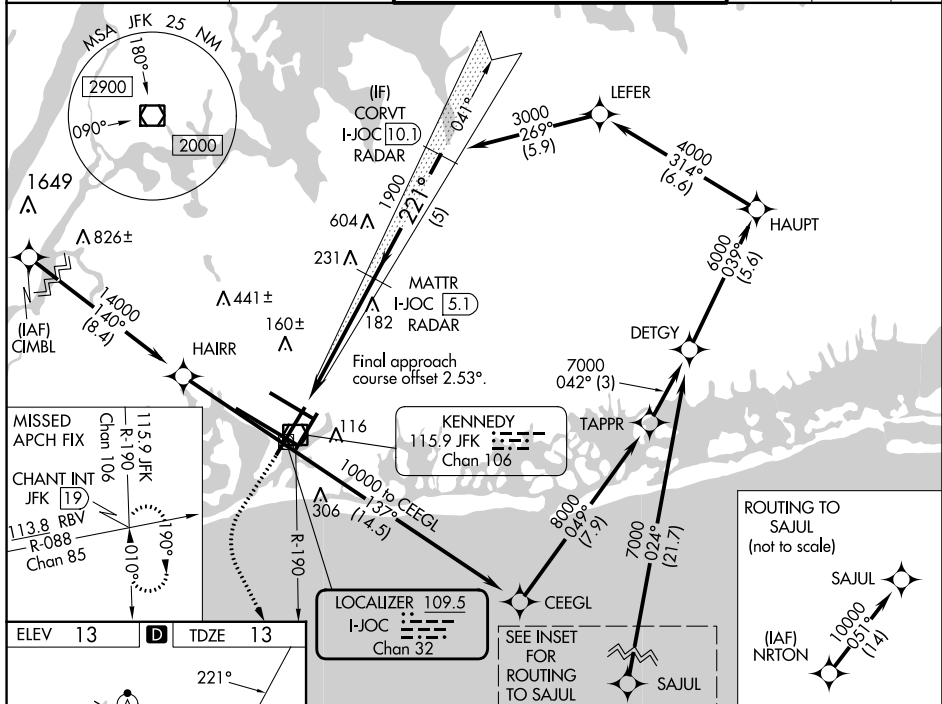
ILS or LOC RWY 22R
JOHN F KENNEDY INTL (JFK)

RNAV 1-GPS or RADAR required for procedure entry.
From CIMBL, NRTON: RNAV 1-GPS required. DME or RADAR required.

MISSED APPROACH: Climb to 2000 then climbing left turn to 4000 on JFK VOR/DME R-190 to CHANT INT and hold.

Simultaneous approach authorized.

D-ATIS (ARR/DEP) (ARR-NE) (ARR-SW)			NEW YORK APP CON		KENNEDY TOWER			GND CON	CLNC DEL	CPDLC
128.725	117.7	115.4	128.125	269.0	Rwys 4R/22L and 13L/31R	119.1	281.55	121.9	135.05	
					Rwys 4L/22R and 13R/31L	123.9	281.55	348.6	348.6	



RLLS Rwy 13L and 13R
HRL all Rwy's
TDZ/CL Rwy 4L, 4R, 12L, 22L, and 21R

FAF to MAP 5.7 NM

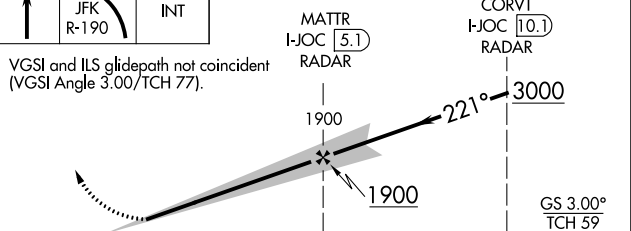
Knots	60	90	120	150	180
Min:Sec	5:42	3:48	2:51	2:17	1:54

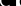
NEW YORK, NEW YORK

Amdt 4 31 DEC 20

2000 ↑	4000 JFK R-190	CHANT INT
-----------	----------------------	--------------

VGSI and ILS glidepath not coincident
(VGSI Angle 3.00/TCH 77).



	5.7 NM		5 NM		
CATEGORY	A	B	C	D	
S-ILS 22R	263/40 250 (300-¾)				
S-LOC 22R	460/55 447 (500-1)		460-13 ₈		447 (500-13 ₈)
 CIRCLING	640-1 627 (700-1)		680-13 ₄ 667 (700-13 ₄)		680-2 667 (700-2)

JOHN F KENNEDY INTL (JFK)

ILS or LOC RWY 22R

NE-2, 11 JUL 2024 to 08 AUG 2024

NE-2, 11 JUL 2024 to 08 AUG 2024

40°38'N-73°47'W