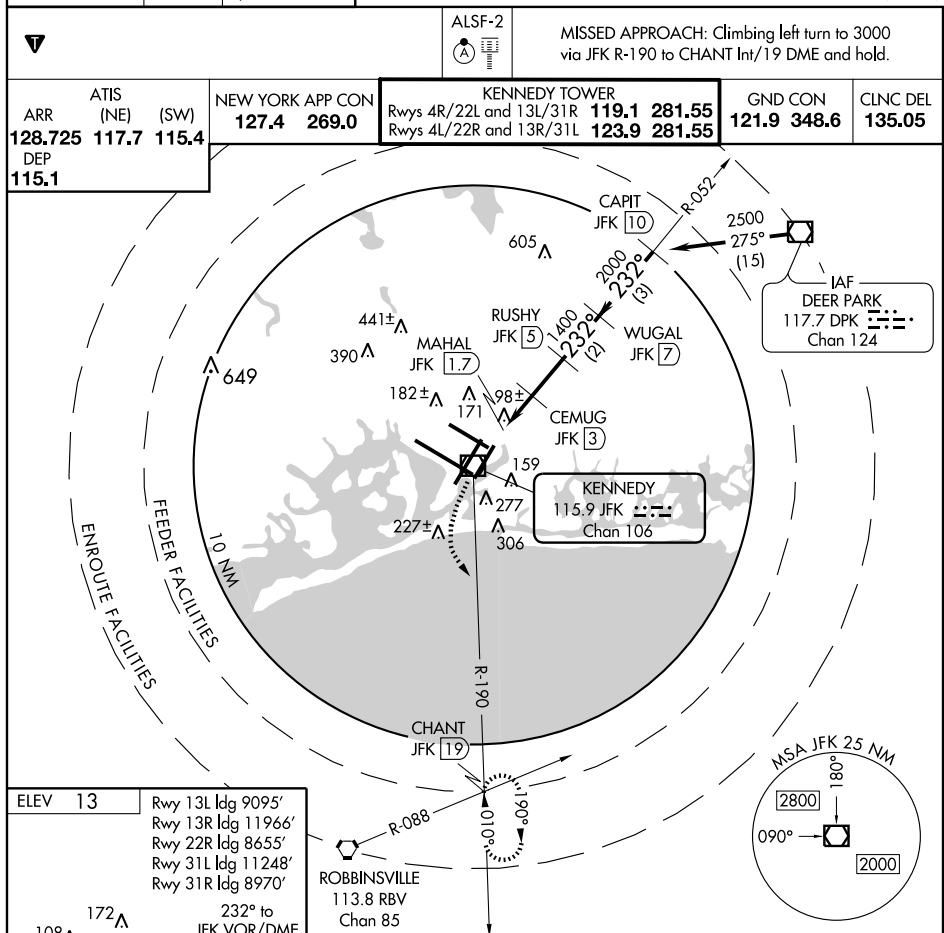


AL-610 (FAA)

VOR/DME JFK 115.9 Chan 106	APP CRS 232°	Rwy Idg 8400 TDZE 13 Apt Elev 13
--	------------------------	---

VOR/DME RWY 22L
NEW YORK / JOHN F. KENNEDY INTL (JFK)



REIL Rwy 4L
HIRL Rwy 4L-22R
4R-22L, 13R-31L, and 13L-31R
TDZ/CL Rwy 4R, 13L, 31R and 22L

Knots	60	90	120	150	180
Min:Sec					

Figure 1-1 is a Standard Instrument Departure (SID) chart for JFK R-190. The chart shows a departure from JFK R-190 (115.9) heading 3000. It includes waypoints: CHANT INT, CEMUG JFK (3), MAHAL JFK (1.7), RUSHY JFK (5), WUGAL JFK (7), and CAPIT JFK (10). The climb profile shows a 600-foot climb to 1400 feet, then a 232-degree climb to 2500 feet. The chart also includes a VOR/DME station and a procedure turn NA. The chart is divided into four categories: A, B, C, and D. The chart is titled 'Figure 1-1 Example of a Standard Instrument Departure (SID) Chart'.

CATEGORY	A	B	C	D
S-22L	440/24 427 (500-½)		440/40 427 (500-¾)	440/50 427 (500-1)
CIRCLING	640-1 627 (700-1)		640-1¼ 627 (700-1¾)	640-2 627 (700-2)

NEW YORK, NEW YORK
Amdt 4D 07018

NEW YORK / JOHN F. KENNEDY INTL (JFK)
VOR/DME RWY 22L

40°38'N - 73°47'W

NE-2. 05 JUL 2007 to 02 AUG 2007