

AL-610 (FAA)

RNAV (GPS) RWY 22L
NEW YORK / JOHN F. KENNEDY INTL (JFK)

MISSED APPROACH: Climb to 3000 direct FOLER and via 189° track to CHANT and hold.

ARR	ATIS		NEW YORK APP CON	KENNEDY TOWER		GND CON	CLNC DEL
128.725	(NE)	(SW)	127.4 269.0	Rwys 4R/22L and 13L/31R	119.1 281.55	121.9 348.6	135.05
				Rwys 4L/22R and 13R/31L	123.9 281.55		

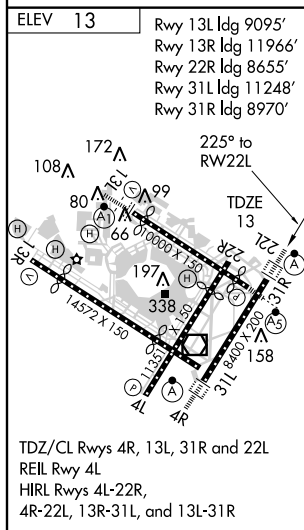
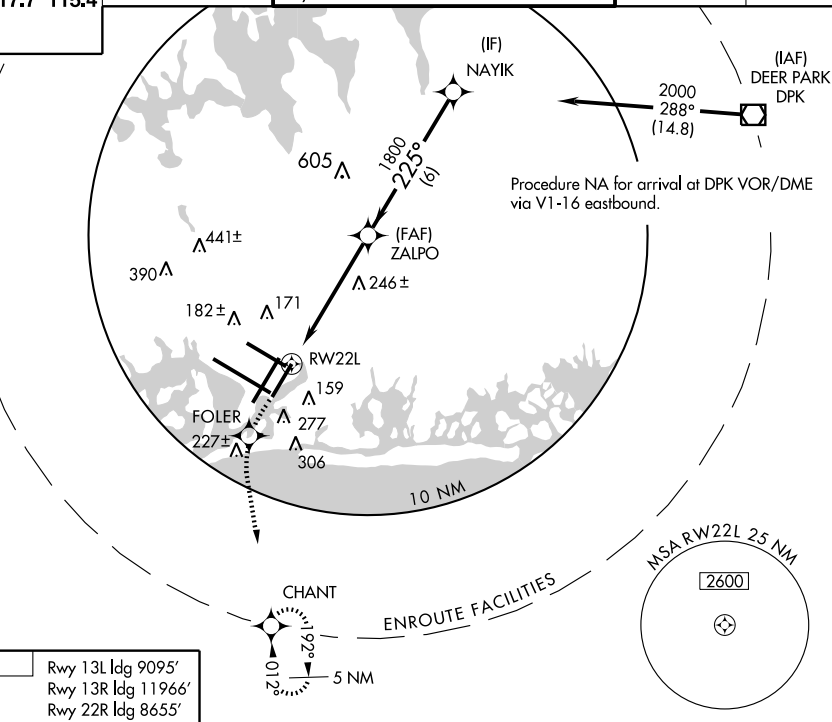


Diagram illustrating the flight path from RW22L to NAYIK, showing distances and turns.

Key points and distances:

- 1.5 NM to RW22L
- 3.9 NM to ZALPO
- 6 NM to NAYIK
- Turn at ZALPO: 225°
- Procedure Turn NA
- GS 3.00° TCH 53
- VGS and RNAV glidepath not coincident.

CATEGORY	A	B	C	D
LPV DA	270/24	257 (300-½)		
RNAV/ VNAV DA	420/50	407 (500-1)		
RNAV MDA	560/24 547 (600-½)	560/50 547 (600-1)	560/60 547 (600-1½)	
CIRCLING	640-1½ 627 (700-1½)	640-1½ 627 (700-1½)	640-2 627 (700-2)	

NEW YORK, NEW YORK
Amdt 1 07046

NEW YORK / JOHN F. KENNEDY INTL (JFK)
40°38'N - 73°47'W **RNAV (GPS) RWY 22L**

NE-2, 05 JUL 2007 to 02 AUG 2007

NE-2. 05 JUL 2007 to 02 AUG 2007