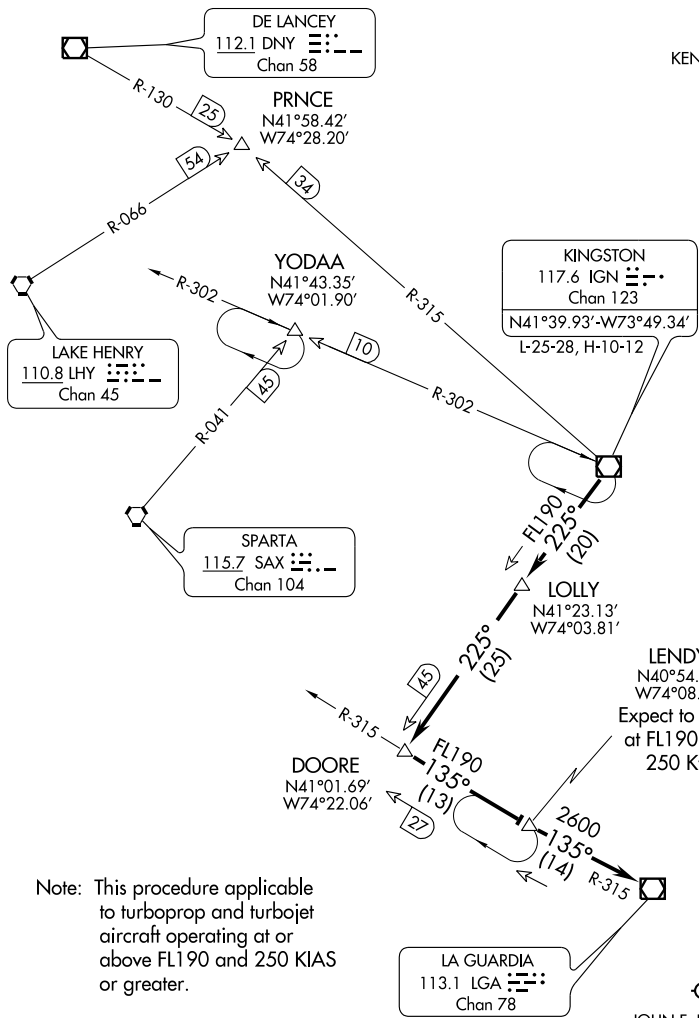


KINGSTON EIGHT ARRIVAL

NEW YORK, NEW YORK

NEW YORK APP CON
125.7 269.0
KENNEDY INTL ATIS ARR 128.725
(NE) 117.7
(SW) 115.4



Note: This procedure applicable to turboprop and turbojet aircraft operating at or above FL190 and 250 KIAS or greater.

**LGA VOR/DME
TEMPORARILY RELOCATED.
CHECK NOTAMS/AIRPORT
FACILITY DIRECTORY.**

DME REQUIRED

NOTE: Chart not to scale.

ARRIVAL ROUTE DESCRIPTION

From over IGN VOR/DME via IGN R-225 to DOORE INT (MEA FL190), then via LGA R-315 to LENDY/14 DME (MEA FL190), then via LGA R-315 to LGA VOR/DME (MEA 2600). Expect radar vectors to final approach course after LGA VOR/DME.

KINGSTON EIGHT ARRIVAL

NEW YORK, NEW YORK

NE-2, 05 JUL 2007 to 02 AUG 2007

NE-2, 05 JUL 2007 to 02 AUG 2007