

LOC/DME I-JOC <b>109.5</b> Chan <b>32</b>	APP CRS <b>222°</b>	Rwy Idg <b>8655</b> TDZE <b>13</b> Apt Elev <b>13</b>
---	------------------------	---

NEW YORK / JOHN F. KENNEDY INTL (JFK)



**MISSED APPROACH:** Climb to 700 then climbing right turn to 4000 direct COL VOR/DME and hold.

ARR	ATIS (NE)	(SW)	NEW YORK APP CON	KENNEDY TOWER	GND CON	CLNC DEL
128.725	117.7	115.4	127.4 269.0	Rwys 4R/22L and 13L/31R 119.1 281.55 Rwys 4L/22R and 13R/31L 123.9 281.55	121.9 348.6	135.05
DEP 115.1	RADAR REQUIRED					

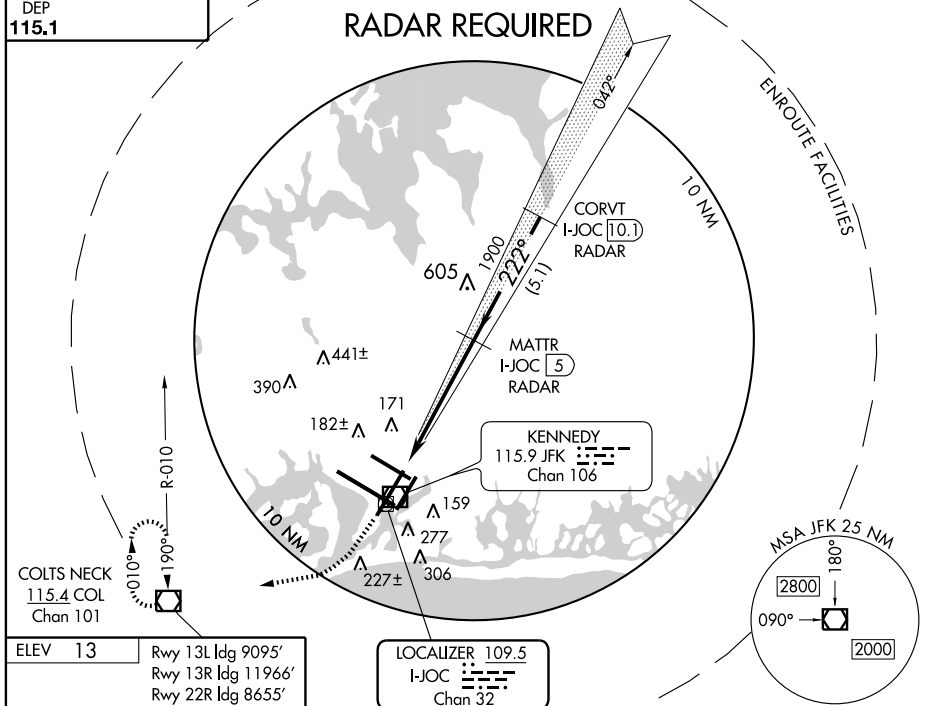


Diagram illustrating the FAF to MAP 5.6 NM for Runway 13L. The diagram shows the flight path with various waypoints and distances. Key waypoints include 108, 172, 131, 99, 83±, 221, 22R, 158, 31L, 4R, 13L, 31R, 22L, 13R, 4L. The diagram also shows the TDZ/CL Rwy 4R, 13L, 31R & 22L, REIL Rwy 4L, and HIRL Rwy 4L-22R, 4R-22L, 13R-31L, and 13L-31R. The distance from FAF to MAP is 5.6 NM. The diagram includes a scale bar from 0 to 180 knots and a time scale from 5:36 to 1:52 minutes.

