

ROBER ONE ARRIVAL

ST-610 (FAA)

NEW YORK, NEW YORK

NE-2, 30 JUN 2011 to 28 JUL 2011

ARRIVAL ROUTE DESCRIPTION

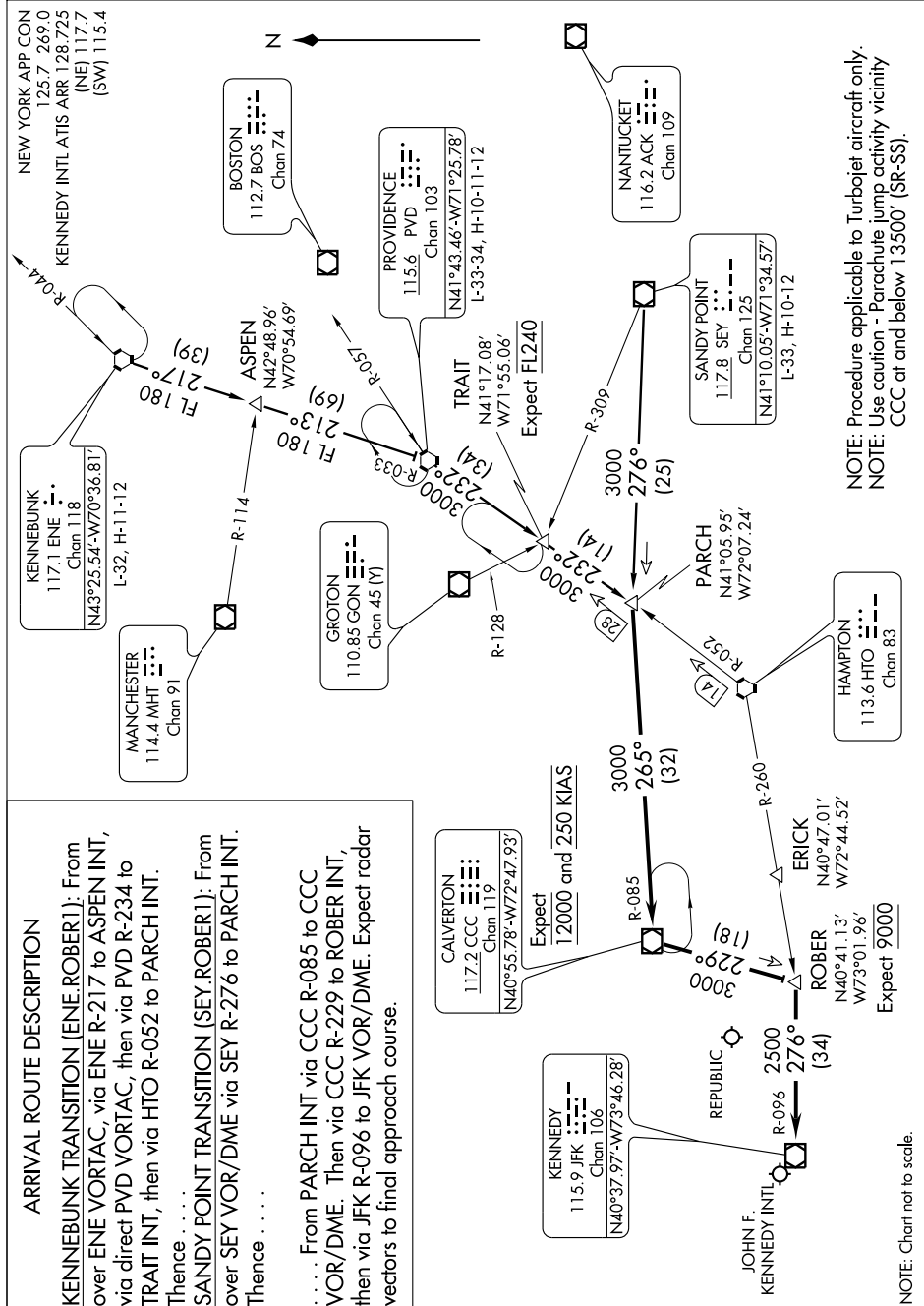
KENNEBUNK TRANSITION (ENE.ROBER1): From over ENE VORTAC, via ENE R-217 to ASPEN INT, then via direct PVD VORTAC, then via PVD R-234 to TRAIT INT, then via HTO R-052 to PARCH INT. Thence...

Thence . . .

over SEY VOR/DME via SEY R-276 to PARCH INT.
Thence

Thence

..... From PARCH INT via CCC R-085 to CCC VOR/DME. Then via CCC R-229 to ROBER INT, then via JFK R-096 to JFK VOR/DME. Expect radar vectors to final approach course.



NOTE: Procedure applicable to Turbojet aircraft only.
NOTE: Use caution - Parachute jump activity vicinity CCC at and below 13500' (SR-SS).

NOTE: Chart not to scale.

NE-2: 30 JUN 2011 to 28 JUL 2011

ROBER ONE ARRIVAL