

11 JUL 2012 to 30 JUN 2011

NEW YORK APP CON
125.7 269.0
KENNEDY INTL ATIS ARR 128.725
(NE) 117.7
(SW) 115.4

ARRIVAL ROUTE DESCRIPTION

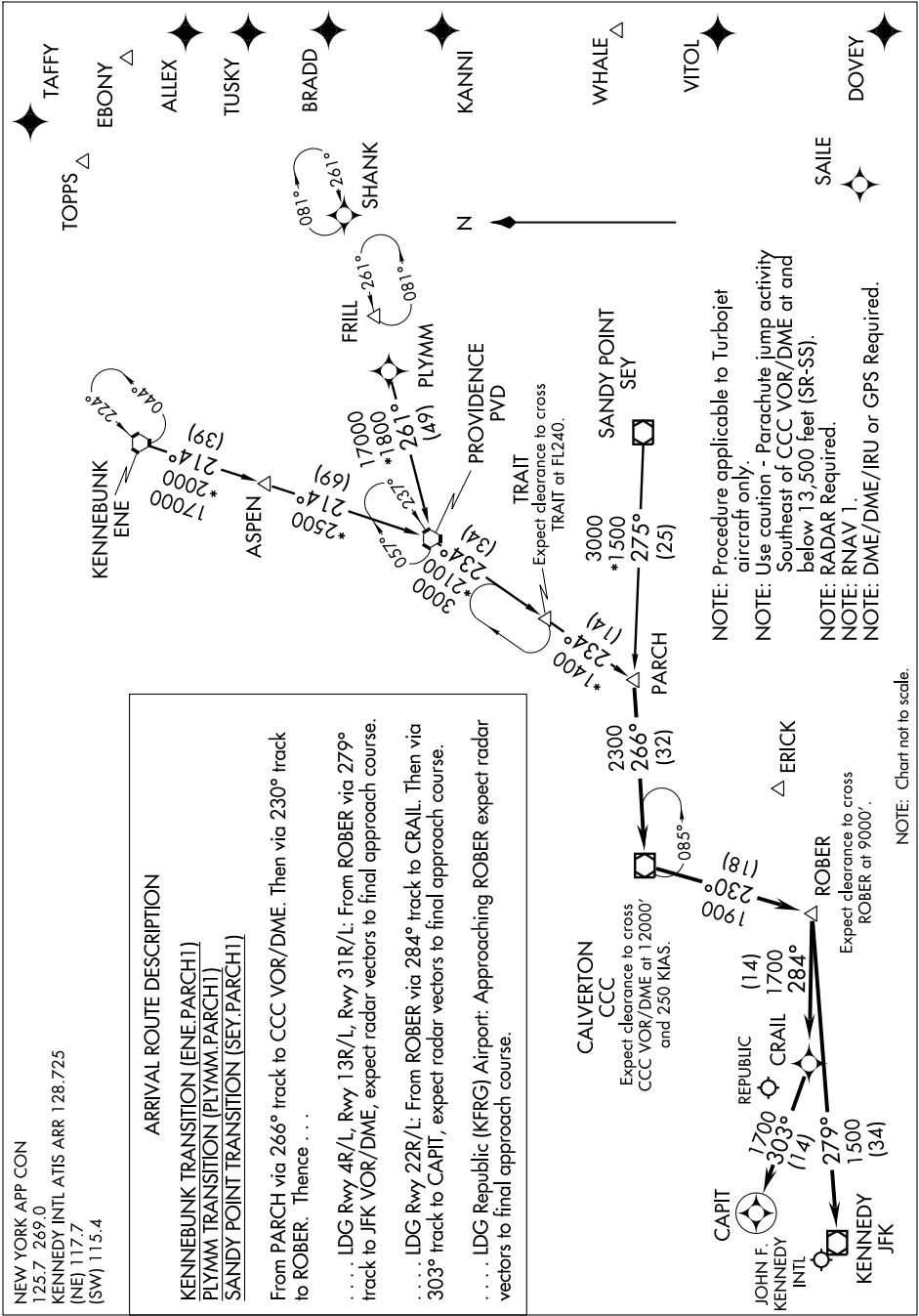
- KENNEDY TRANSITION (ENE.PARCH1)
- PLYMM TRANSITION (PLYMM.PARCH1)
- SANDY POINT TRANSITION (SEY.PARCH1)

From PARCH via 266° track to CCC VOR/DME. Then via 230° track to ROBER. Thence . . .

. . . . LDG Rwy 4R/L, Rwy 13R/L, Rwy 31R/L: From ROBER via 279° track to JFK VOR/DME, expect radar vectors to final approach course.

. . . . LDG Rwy 22R/L: From ROBER via 284° track to CRAIL. Then via 303° track to CAPIT, expect radar vectors to final approach course.

. . . . LDG Republic (KFRG) Airport: Approaching ROBER expect radar vectors to final approach course.



NOTE: Chart not to scale.

NE-2, 30 JUN 2011 to 28 JUL 2011