

AL-610 (FAA)

VOR/DME JFK 115.9 Chan 106	APP CRS 232°	Rwy Idg 8400 TDZE 13 Apt Elev 13
--	------------------------	---

VOR/DME RWY 22L

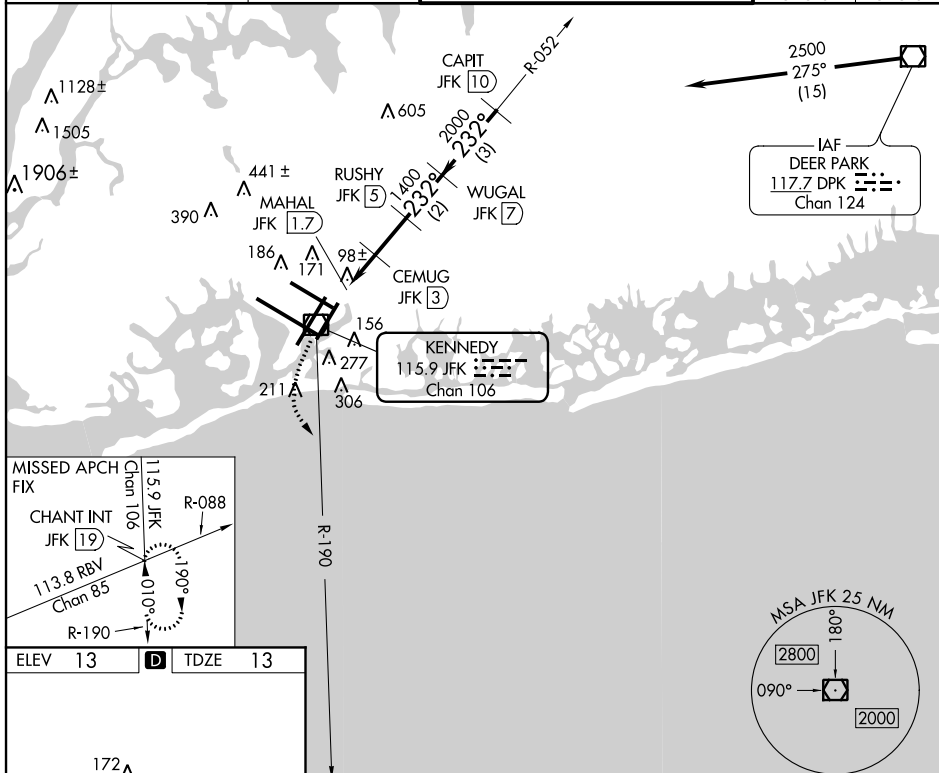
NEW YORK / JOHN F. KENNEDY INTL (JFK)



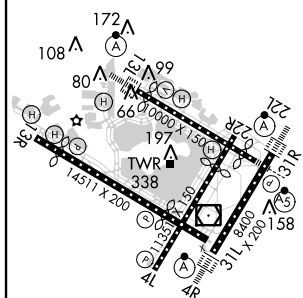
ALSF-2

MISSED APPROACH: Climbing left turn to 3000
via JFK R-190 to CHANT INT/19 DME and hold.

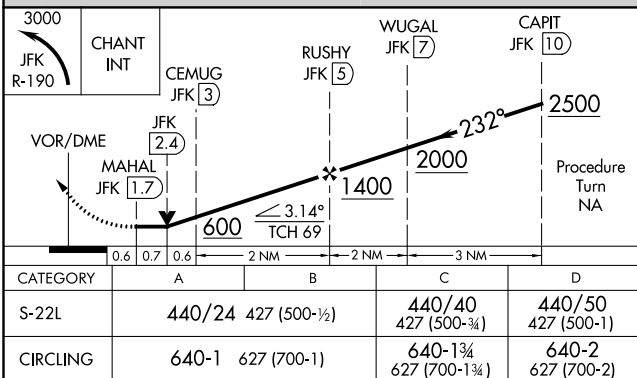
ATIS (ARR-NE) (ARR-SW)		NEW YORK APP CON		KENNEDY TOWER		GND CON	CLNC DEL
128.725	117.7	115.4	127.4	269.0	Rwys 4R/22L and 13L/31R Rwys 4L/22R and 13R/31L	119.1 281.55	121.9 135.05
						123.9 281.55	348.6 348.6



ELEV	13	D	TDZE	13
------	----	----------	------	----



RLLS Rwy 13R
HIRL all Rwy's
TDZ/CL Rwy's 4R, 13L, 31R and 22L



NEW YORK, NEW YORK
Amdt 4D 13066

NEW YORK / JOHN F. KENNEDY INTL (JFK)

40°38'N-73°47'W

VOR/DME RWY 22L

NE-2, 27 JUN 2013 to 25 JUL 2013