

APP CRS	Rwy Idg	8400
225°	THRE	13
	Apt Elev	14

RNAV (RNP) Z RWY 22L

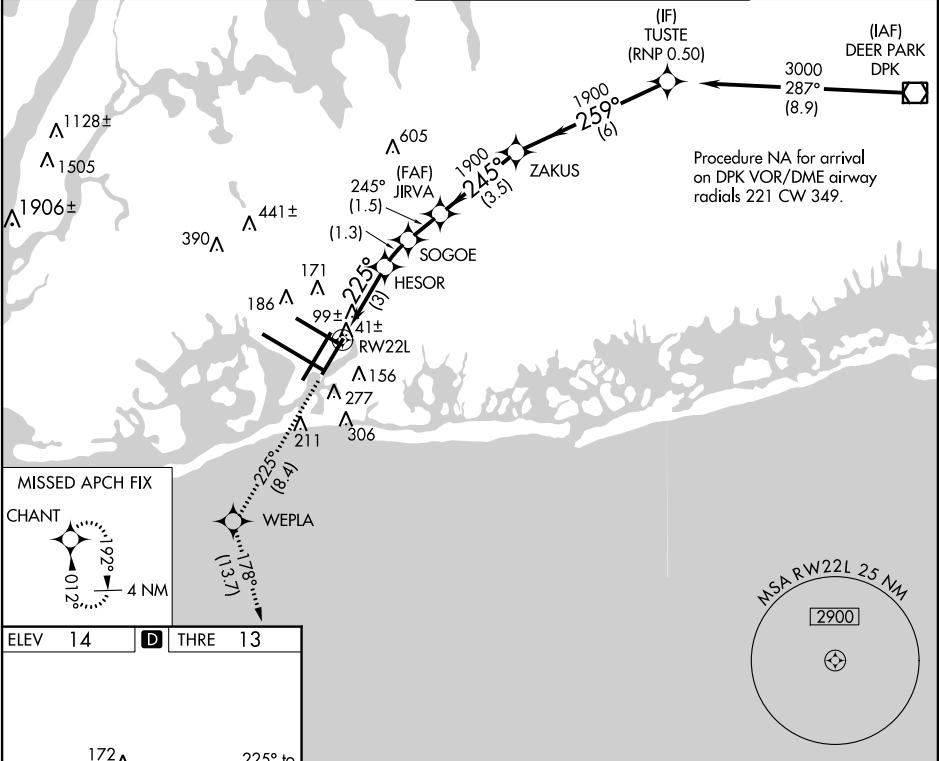
NEW YORK / JOHN F. KENNEDY INTL (JFK)

For uncompensated Baro-VNAV systems, procedure NA below -12°C (11°F) or above 54°C (130°F). RF required. GPS required. Simultaneous approach authorized with ILS Rwy 22R. Use of FD or AP providing RNAV track guidance required during simultaneous operations. For inop ALSF, increase RNP 0.20 and RNP 0.30 all Cats visibility to RVR 6000.

ALSF-2

MISSED APPROACH: Climb to 3000 on track 225° to WEPLA and on track 178° to CHANT and hold.

ATIS (ARR-NE) (ARR-SW)	NEW YORK APP CON	KENNEDY TOWER Rwys 4R/22L and 13L/31R Rwys 4L/22R and 13R/31L	GND CON	CLNC DEL
128.725 117.7 115.4	127.4 269.0	119.1 281.55 123.9 281.55	121.9 348.6	135.05 348.6



ELEV 14 D THRE 13

RLS Rwy 13R  
HIRL all Rwys  
TDZ/CL Rwys 4R, 13L, 31R and 22L

3000

tr 225°

WEPLA

tr 178°

CHANT

VGSI and RNAV glidepath not coincident (VGSI Angle 3.00/TCH 66).

JIRVA

ZAKUS

TUSTE

1900

259°

3000

GP 3.00° TCH 50

3 NM

1.3 NM

1.5 NM

3.5 NM

6 NM

CATEGORY	A	B	C	D
RNP 0.20 DA	317/40	304 (400-¾)		
RNP 0.30 DA	406/40	393 (400-¾)		

AUTHORIZATION REQUIRED