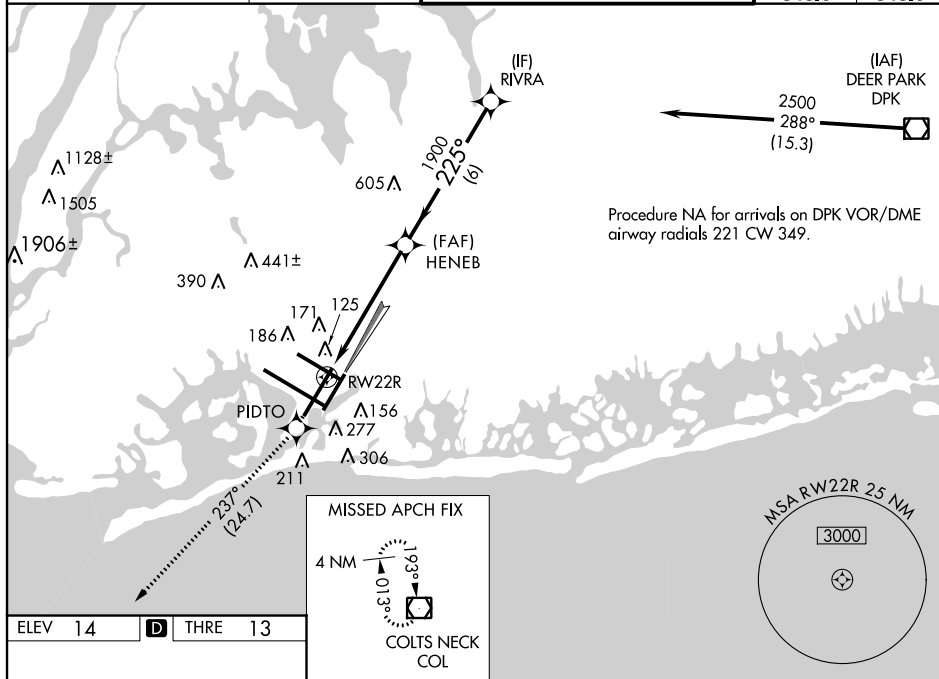


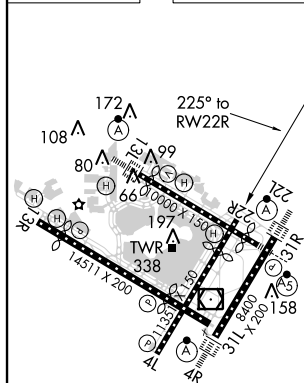
NEW YORK / JOHN F. KENNEDY INTL (JFK)

MISSED APPROACH: Climb to 4000
direct PIDTO and on track 237° to
COL VOR/DME and hold.

ATIS (ARR-NE) (ARR-SW)		NEW YORK APP CON		KENNEDY TOWER		GND CON	CLNC DEL
128.725	117.7	115.4	127.4	269.0	Rwys 4R/22L and 13L/31R Rwys 4L/22R and 13R/31L	119.1 281.55	121.9 135.05
						123.9	348.6
						281.55	348.6



ELEV 14	D	THRE 13
---------	----------	---------



RLLS Rwy 13R
HIRL all Rwys
TDZ/CL Rwys 4R, 13L, 31R and 22L

The diagram illustrates the RVR calculation for a non-precision approach. It shows a profile view of the terrain and the approach path. Key elements include:

- A vertical scale on the left showing 4000 feet and a 10-degree climb gradient (CLIMB GRD 10°).
- A vertical scale on the right showing 1900 feet and 2500 feet.
- A horizontal distance scale at the bottom showing 1.7 NM, 4 NM, and 6 NM.
- A dashed line representing the 10-degree climb gradient starting from the 1.7 NM point.
- A solid line representing the 225-degree bearing from the 1900-foot point to the 2500-foot point.
- A note indicating "RIVRA" (Reduced Vertical Visibility) at the 2500-foot point.

40°38'N-73°47'W

RNAV (GPS) RWY 22R