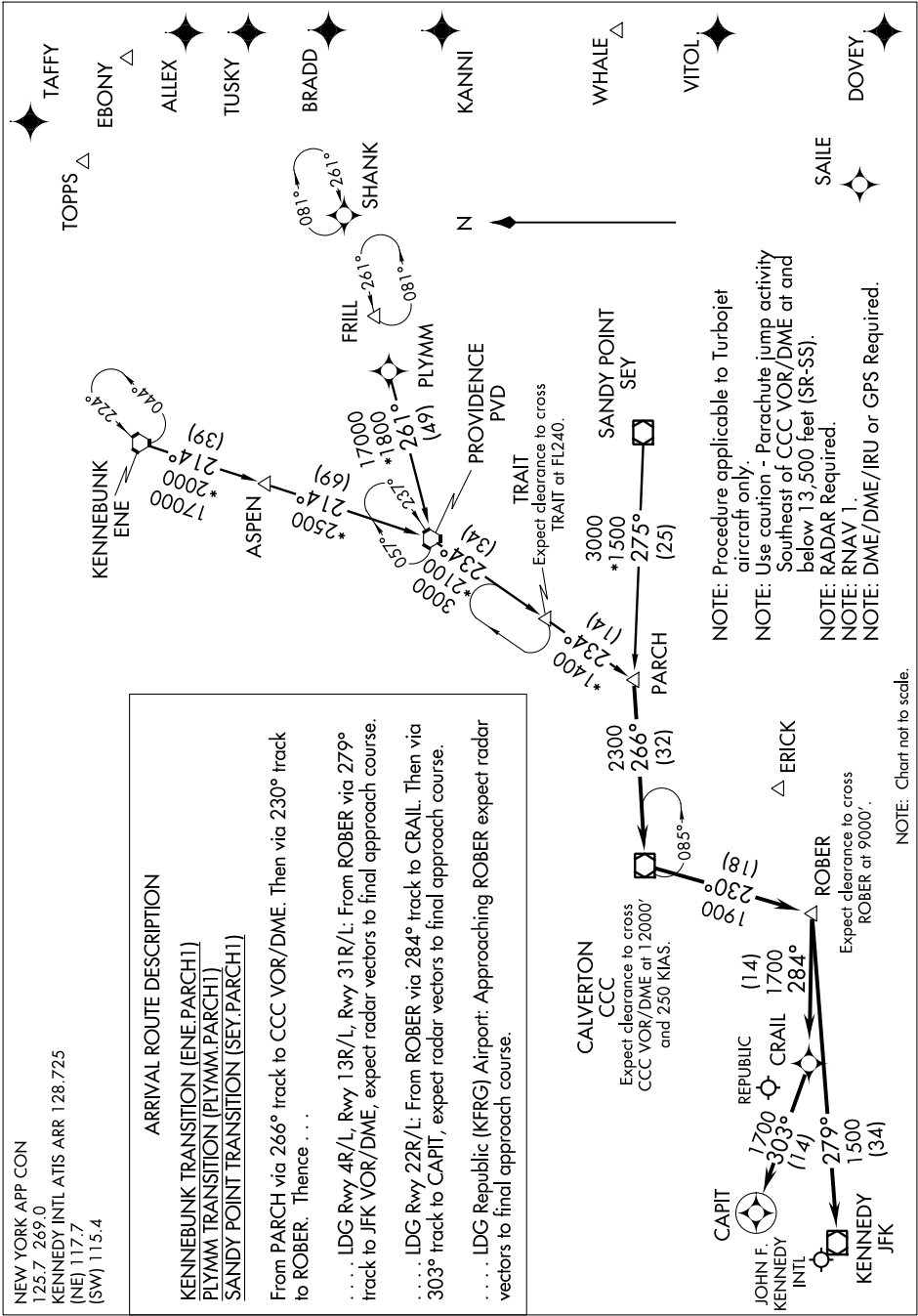


PARCH ONE ARRIVAL (RNAV)

ST-610 (FAA)

NEW YORK, NEW YORK

NE-2, 27 JUN 2013 to 25 JUL 2013



PARCH ONE ARRIVAL (RNAV)

NEW YORK, NEW YORK

NE-2, 27 JUN 2013 to 25 JUL 2013