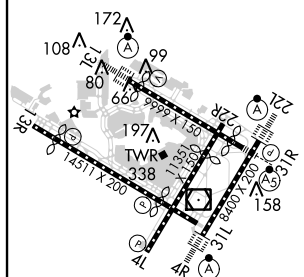


VOR/DME RWY 22L
JOHN F KENNEDY INTL (JFK)



MISSED APPROACH: Climbing left turn to 3000
via JFK R-190 to CHANT INT/19 DME and hold.



RLLS Rwy 13R
HIRL all Rwys
TDZ/CL Rwys 4R, 13L, 31R and 22L

<div>3000 JFK R-190</div> <div>CHANT INT</div>		<div>CEMUG JFK (3)</div>		<div>RUSHY JFK (5)</div>	<div>WUGAL JFK (7)</div>	<div>CAPIT JFK (10)</div>
<div>JFK VOR/DME</div>		<div>JFK (2.4)</div>	<div>MAHAL JFK (1.7)</div>	<div>232°</div>		
<div>600</div>		<div>1400</div>		<div>2000</div>		<div>2500</div>
<div>3.14°</div>		<div>TCH 69</div>		<div>Procedure Turn NA</div>		
<div>0.6 0.7 0.6</div>		<div>2 NM</div>		<div>2 NM</div>		<div>3 NM</div>
CATEGORY	A		B		C	D
S-22L	440/24 427 (500-½)				440/40 427 (500-¾)	440/50 427 (500-1)
CIRCLING	640-1 627 (700-1)				640-1¼ 627 (700-1¾)	640-2 627 (700-2)