

WAAS CH <b>97318</b> <b>W22A</b>	APP CRS <b>225°</b>	Rwy Idg TDZE <b>13</b> Apt Elev <b>13</b>
--	------------------------	---

RNAV (GPS) Y RWY 22L

JOHN F KENNEDY INTL (JFK)

⚠

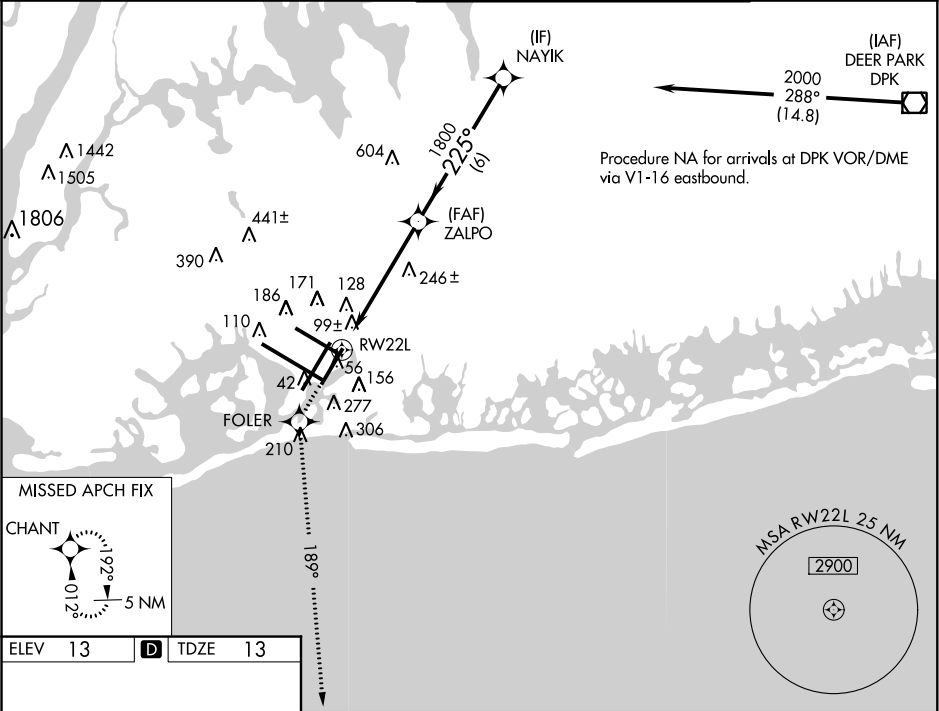
For uncompensated Baro-VNAV systems, LNAV/VNAV NA below -13°C (8°F) or above 49°C (120°F). DME/DME RNP-0.3 NA. Simultaneous approach authorized with Rwy 22R. LNAV procedure NA during simultaneous operations. Use of FD or AP providing RNAV track guidance required during simultaneous operations.

ALSF-2

MISSED APPROACH:

Climb to 3000 direct FOLER and via 189° track to CHANT and hold.

ATIS (ARR-NE) (ARR-SW)	NEW YORK APP CON	KENNEDY TOWER	GND CON	CLNC DEL
<b>128.725 117.7 115.4</b>	<b>128.12 269.0</b>	Rwys 4R/22L and 13L/31R <b>119.1 281.55</b> Rwys 4L/22R and 13R/31L <b>123.9 281.55</b>	<b>121.9 348.6</b>	<b>135.05 348.6</b>



ELEV 13

**D**

TDZE 13

RLLS Rwy 13R

HIRL all Rwys

TDZ/CL Rwys 4R, 13L, 31R and 22L

3000	FOLER	tr 189°	CHANT	VGSI and RNAV glidepath not coincident (VGSI Angle 3.00/TCH 66).			
*LNAV only				ZALPO	NAYIK	2000	Procedure Turn NA
RW22L				1.5	3.9 NM	6 NM	GP 3.00° TCH 53
CATEGORY	A	B	C	D			
LPV DA	270/24		257 (300-½)				
LNAV/VNAV DA	420/50		407 (500-1)				
LNAV MDA	560/24 547 (600-½)		560/50 547 (600-1)		560/60 547 (600-1¼)		
CIRCLING	640-1 627 (700-1)		640-1¾ 627 (700-1¾)		640-2 627 (700-2)		