

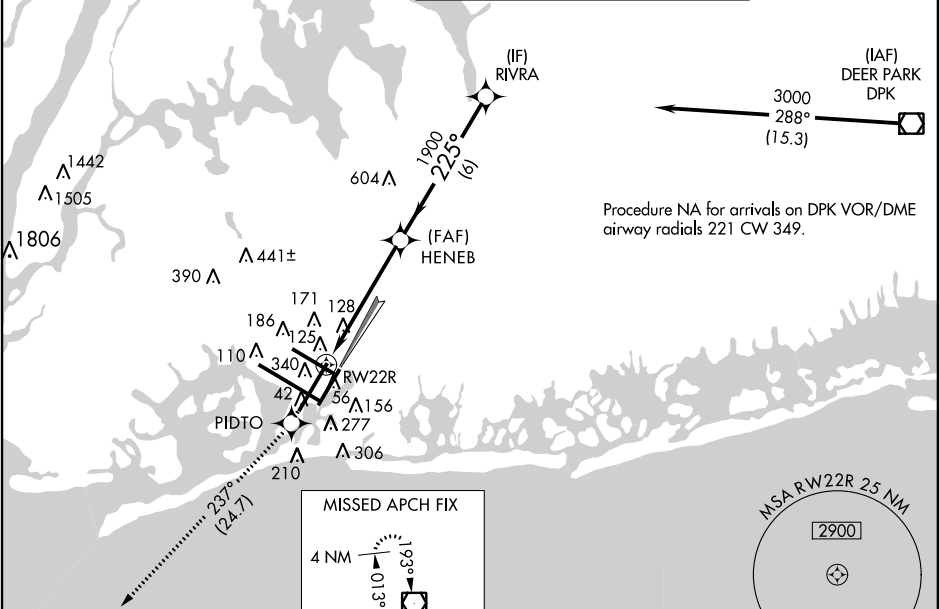
WAAS CH 40019 W22B	APP CRS 225°	Rwy Idg TDZE 12 Apt Elev 13	8655
--	------------------------	---	-------------

RNAV (GPS) RWY 22R
JOHN F KENNEDY INTL (JFK)

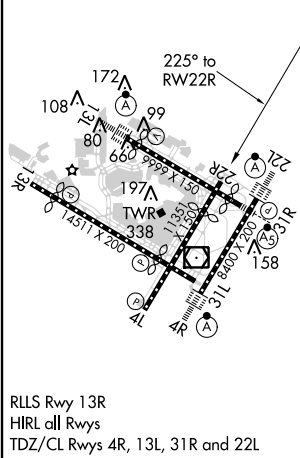
▼ For uncompensated Baro-VNAV systems, LNAV/VNAV NA below -12°C (11°F) or above 54°C (130°F). DME/DME RNP-0.3 NA. Simultaneous approach authorized with ILS or LOC Rwy 22L, ILS Rwy 22L (CAT II), ILS Rwy 22L (CAT III), RNAV (GPS) Y Rwy 22L. LNAV procedure NA during simultaneous operations. Use of FD or AP providing RNAV track guidance required during simultaneous operations.




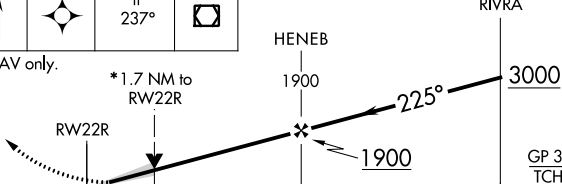

MISSED APPROACH: Climb to 4000 direct PIDTO and on track 237° to COL VOR/DME and hold.

ATIS (ARR-NE)	(ARR-SW)	NEW YORK APP CON	KENNEDY TOWER Rwys 4R/22L and 13L/31R	Rwys 4L/22R and 13R/31L	GND CON	CLNC DEL
128.725	117.7	115.4	128.12	269.0	119.1 281.55 123.9 281.55	121.9 135.05 348.6 348.6



ELEV 13	D	TDZE 12
---------	----------	---------



4000	PIDTO	COL		
		tr 237°		
*LNAV only.				
				
CATEGORY	A	B	C	D
LPV DA	269/40 257 (300-¾)			
LNAV/ VNAV DA	501-1½ 489 (500-1½)			
LNAV MDA	600/50	588 (600-1)	600-1¾ 588 (600-1¾)	
 CIRCLING	640-1	627 (700-1)	640-1¾ 627 (700-1¾)	660-2 647 (700-2)

NE-2, 25 JUN 2015 to 23 JUL 2015

NE-2, 25 JUN 2015 to 23 JUL 2015