

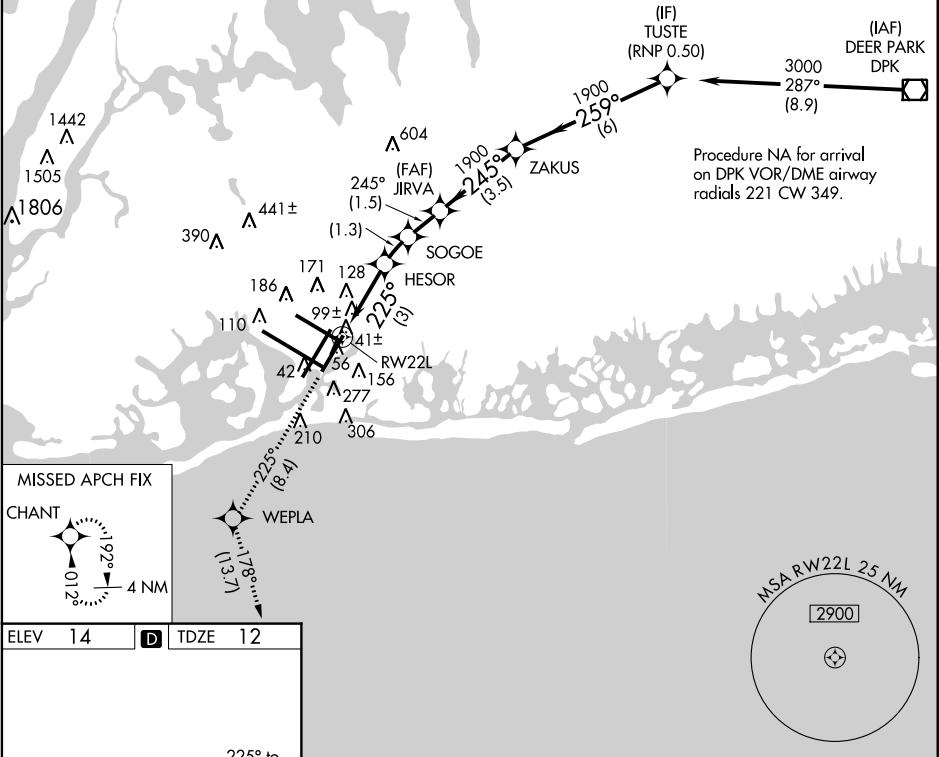
APP CRS	Rwy Idg	8400
225°	TDZE	12
	Apt Elev	14

RNAV (RNP) Z RWY 22L
JOHN F KENNEDY INTL (JFK)

For uncompensated Baro-VNAV systems, procedure NA below -12°C (11°F) or above 54°C (130°F). RF required. GPS required. Simultaneous operations authorized. Use of FD or AP providing RNAV track guidance required during simultaneous operations. For inop ALSF, increase RNP 0.20 and RNP 0.30 all Cats visibility to RVR 6000.

ALSF-2 MISSED APPROACH: Climb to 3000 on track 225° to WEPLA and on track 178° to CHANT and hold.

ATIS (ARR-NE) (ARR-SW)	NEW YORK APP CON	KENNEDY TOWER Rwys 4R/22L and 13L/31R Rwys 4L/22R and 13R/31L	GND CON	CLNC DEL	CPDLC
128.725 117.7 115.4	128.12 269.0	119.1 281.55 123.9 281.55	121.9 348.6	135.05 348.6	



ELEV 14	TDZE 12	3000 tr 225° WEPLA tr 178° CHANT			
225° to RW22L		VGSi and RNAV glidepath not coincident (VGSi Angle 3.00/TCH 66).			
REIL Rwy 4L RLS Rwy 13R HIRL all Rwys TDZ/CL Rwys 4R, 13L, 31R and 22L		JIRVA ZAKUS TUSTE HESOR SOGOE 1019 1429 1900 259° 3000 RW22L 225° 1900 1900 3 NM 1.3 NM 1.5 NM 3.5 NM 6 NM			
		GP 3.00° TCH 50			
		CATEGORY A B C D			
		RNP 0.20 DA 316/40 304 (400-¾)			
		RNP 0.30 DA 405/40 393 (400-¾)			
		AUTHORIZATION REQUIRED			

NE-2, 23 JUN 2016 to 21 JUL 2016

NE-2, 23 JUN 2016 to 21 JUL 2016