

WAAS CH 40019 W22B	APP CRS 225°	Rwy ldg 7795 TDZE 12 Apt Elev 13
--	------------------------	---

RNAV (GPS) RWY 22R

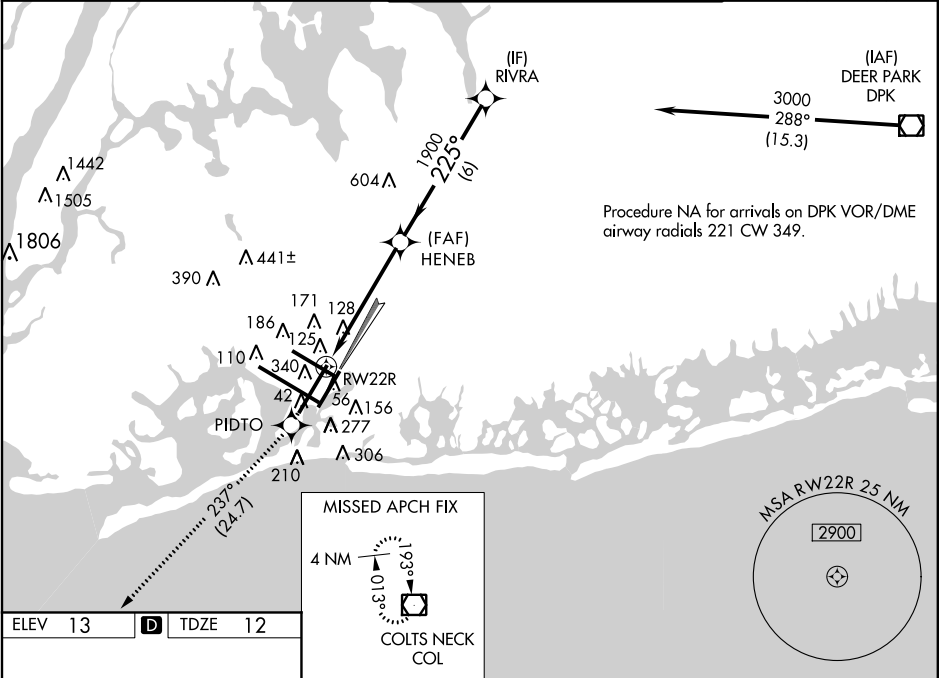
JOHN F KENNEDY INTL (JFK)

▼

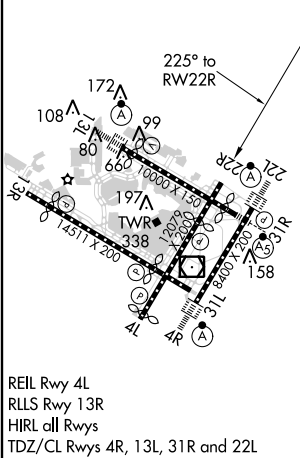
For uncompensated Baro-VNAV systems, LNAV/VNAV NA below -12°C (11°F) or above 54°C (130°F). DME/DME RNP-0.3 NA. Simultaneous approach authorized. LNAV procedure NA during simultaneous operations. Use of FD or AP providing RNAV track guidance required during simultaneous operations.

MISSED APPROACH:
Climb to 4000 direct
PIDTO and on track 237°
to COL VOR/DME and hold.

ATIS (ARR-NE) (ARR-SW)			NEW YORK APP CON		KENNEDY TOWER		GND CON	CLNC DEL	CPDLC
128.725	117.7	115.4	128.12	269.0	Rwys 4R/22L and 13L/31R Rwys 4L/22R and 13R/31L	119.1 281.55 123.9 281.55	121.9 348.6	135.05 348.6	



ELEV 13	D	TDZE 12
---------	----------	---------



4000	PIDTO	COL	RWY 22R	HENEB	RIVRA
↑	✱	tr 237°	✱	✱	✱
*LNAV only.					
RWY 22R 1.7 NM to RWY 22R 4 NM 6 NM 3000 1900 225° GP 3.00° TCH 59					
CATEGORY	A	B	C	D	
LPV DA	269/40	257 (300-¾)			
LNAV/VNAV DA	501-1½	489 (500-1½)			
LNAV MDA	600/50	588 (600-1)	600-1¾	588 (600-1¾)	
C CIRCLING	640-1	627 (700-1)	640-1¾	627 (700-1¾)	660-2