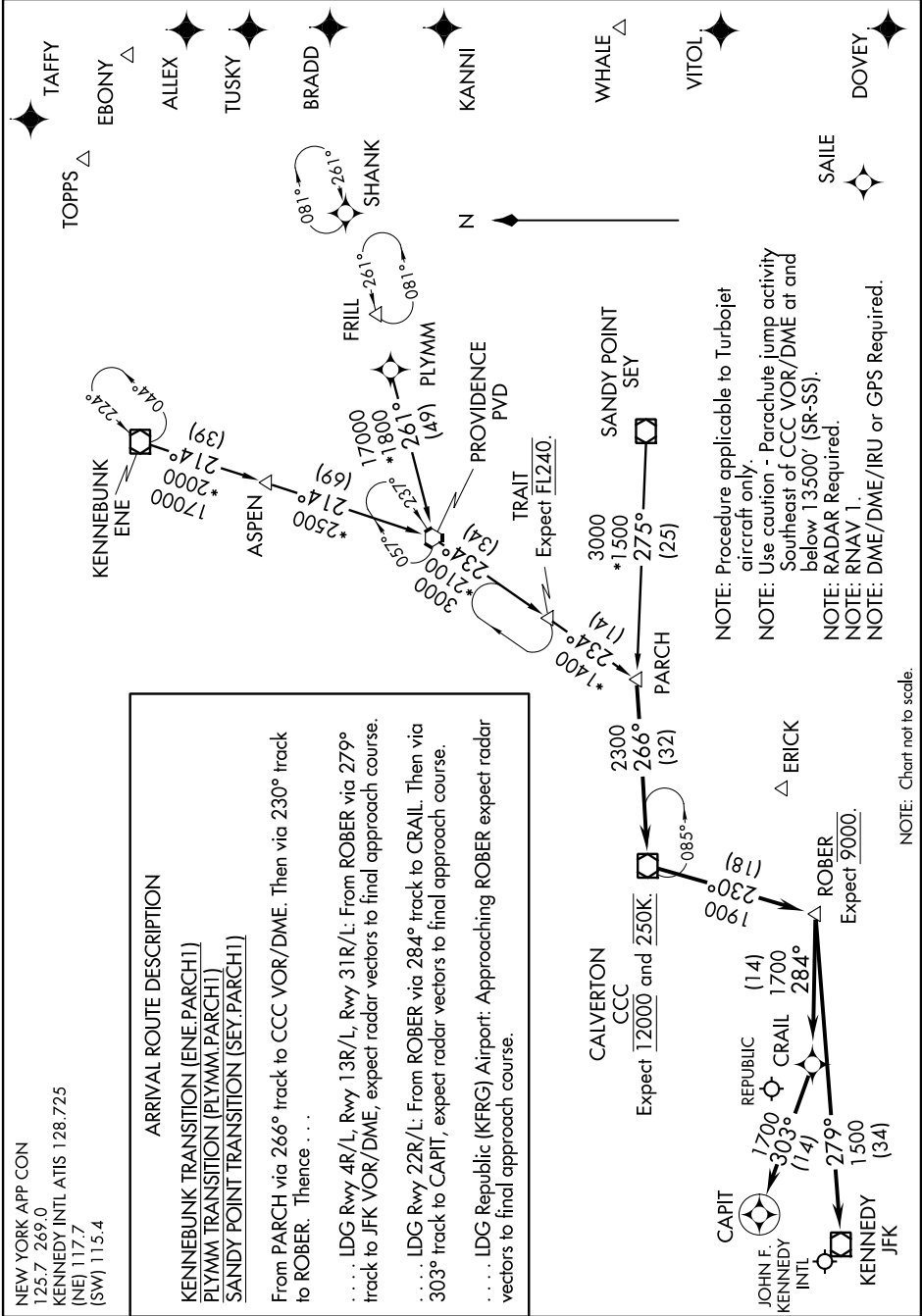


PARCH ONE ARRIVAL (RNAV)

ST-610 (FAA)

NEW YORK, NEW YORK

NE-2, 23 JUN 2016 to 21 JUL 2016



PARCH ONE ARRIVAL (RNAV)

NEW YORK, NEW YORK

NOTE: Chart not to scale.

NE-2, 23 JUN 2016 to 21 JUL 2016

- NOTE: Procedure applicable to Turbojet aircraft only.
- NOTE: Use caution - Parachute jump activity Southeast of CCC VOR/DME at and below 13500' (SR-SS).
- NOTE: RADAR Required.
- NOTE: RNAV 1.
- NOTE: DME/DME/IRU or GPS Required.