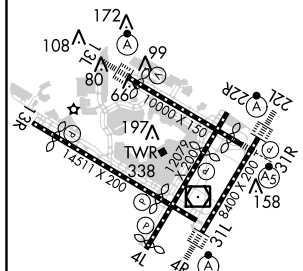
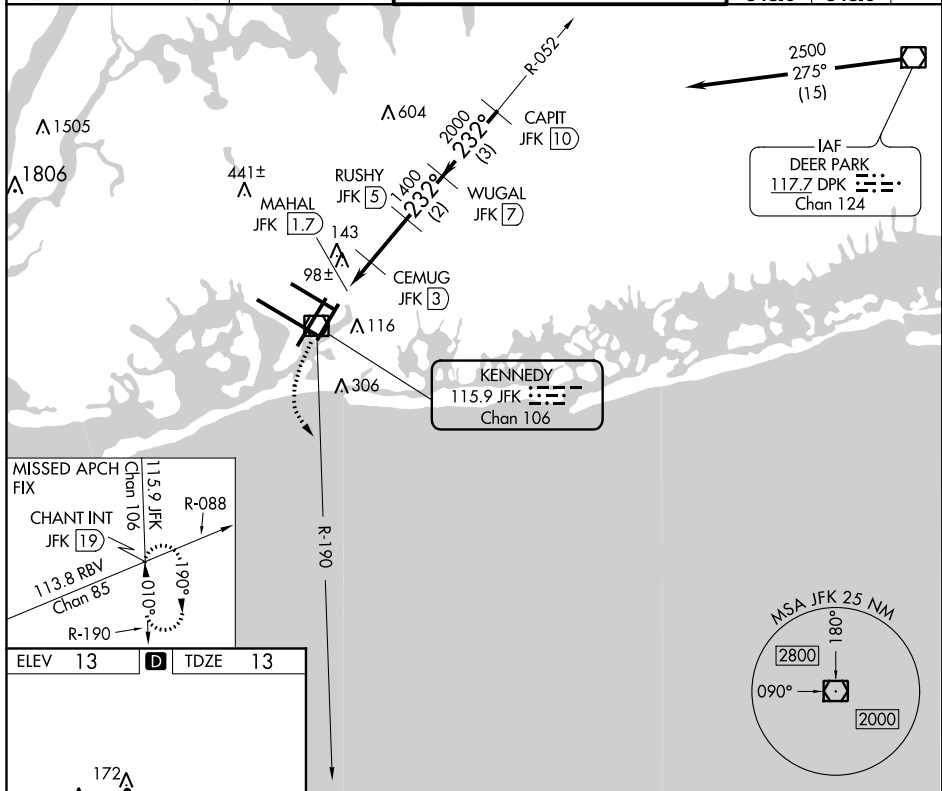


VOR/DME RWY 22L
JOHN F KENNEDY INTL (JFK)



MISSED APPROACH: Climbing left turn to 3000 via JFK R-190 to CHANT INT/19 DME and hold.

D-ATIS (ARR/DEP) (ARR-NE) (ARR-SW)	NEW YORK APP CON		KENNEDY TOWER			GND CON	CLNC DEL	
128.725 117.7 115.4	128.12	269.0	Rwys 4R/22L and 13L/31R	119.1	281.55	121.9	135.05	CPDLC
			Rwys 4L/22R and 13R/31L	123.9	281.55	348.6	348.6	



REIL Rwy 4L
RLLS Rwy 13R
HIRL all Rwy's
TDZ/CL Rwy's 4R, 13L, 31R and 22L

<p>JFK R-190</p> <p>CHANT INT</p> <p>CEMUG JKF (3)</p> <p>RUSHY JKF (5)</p> <p>WUGAL JKF (7)</p> <p>CAPIT JKF (10)</p> <p>JFK VOR/DME</p> <p>MAHAL JKF (1.7)</p> <p>JFK (2.4)</p> <p>600</p> <p>1400</p> <p>2000</p> <p>232°</p> <p>2500</p> <p>3.14°</p> <p>TCH 69</p> <p>0.6 0.7 0.6 2 NM 2 NM 3 NM</p> <p>Procedure Turn NA</p>					
CATEGORY	A		B	C	D
S-22L	440/24 427 (500-½)			440/40 427 (500-¾)	440/50 427 (500-1)
CIRCLING	640-1 627 (700-1)			640-1¼ 627 (700-1¾)	640-2 627 (700-2)