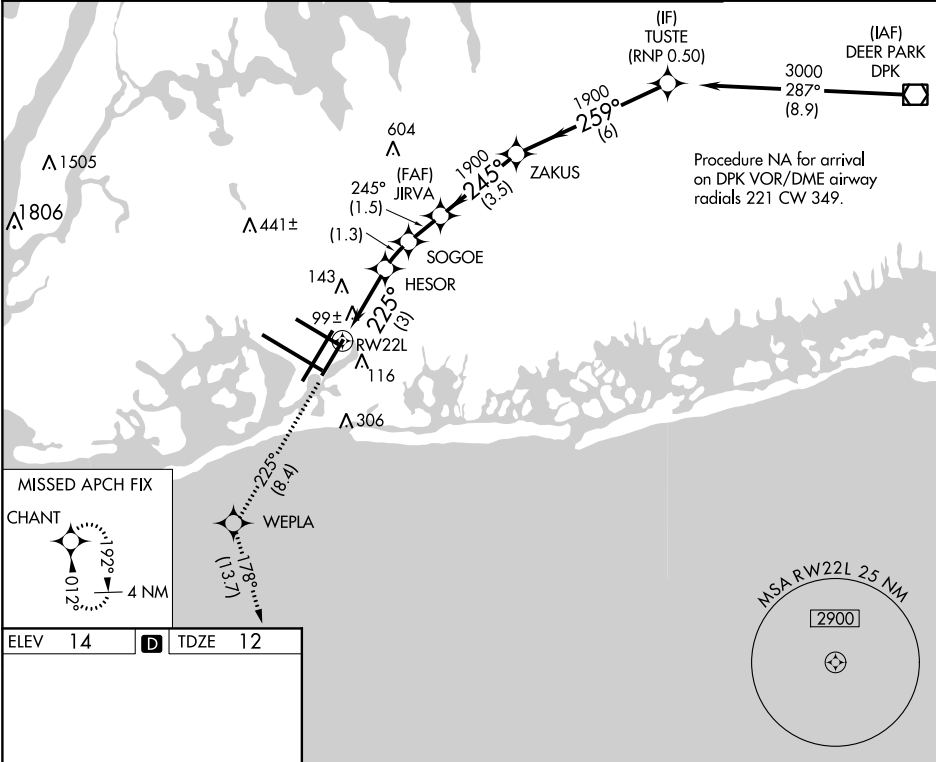


APP CRS	Rwy Idg	8400
225°	TDZE	12
	Apt Elev	14

RNAV (RNP) Z RWY 22L  
JOHN F KENNEDY INTL (JFK)

▼ For uncompensated Baro-VNAV systems, procedure NA below -12°C (11°F) or above 54°C (130°F). RF required. Simultaneous operations authorized. Use of FD or AP providing RNAV track guidance required during simultaneous operations. For inop ALSF, increase RNP 0.20 and RNP 0.30 all Cats visibility to RVR 6000.	ALSF-2	MISSED APPROACH: Climb to 3000 on track 225° to WEPLA and on track 178° to CHANT and hold.
--	--------	--

D-ATIS (ARR/DEP) (ARR-NE) (ARR-SW)	NEW YORK APP CON	KENNEDY TOWER	GND CON	CLNC DEL	CPDLC
128.725 117.7 115.4	128.12 269.0	Rwys 4R/22L and 13L/31R 119.1 281.55 Rwys 4L/22R and 13R/31L 123.9 281.55	121.9 348.6	135.05 348.6	



ELEV 14	TDZE 12	VGSi and RNAV glidepath not coincident (VGSi Angle 3.00/TCH 66).			
REIL Rwy 4L RLLS Rwy 13R HIRL all Rws TDZ/CL Rws 4R, 13L, 31R and 22L		TUSTE 3000 GP 3.00° TCH 50			
		CATEGORY A B C D			
		RNP 0.20 DA 316/40 304 (400-¾)			
		RNP 0.30 DA 405/40 393 (400-¾)			
		AUTHORIZATION REQUIRED			

NE-2, 22 JUN 2017 to 20 JUL 2017

NE-2, 22 JUN 2017 to 20 JUL 2017