

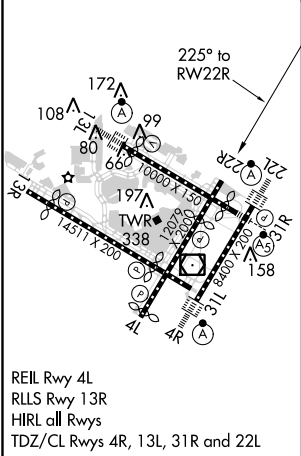
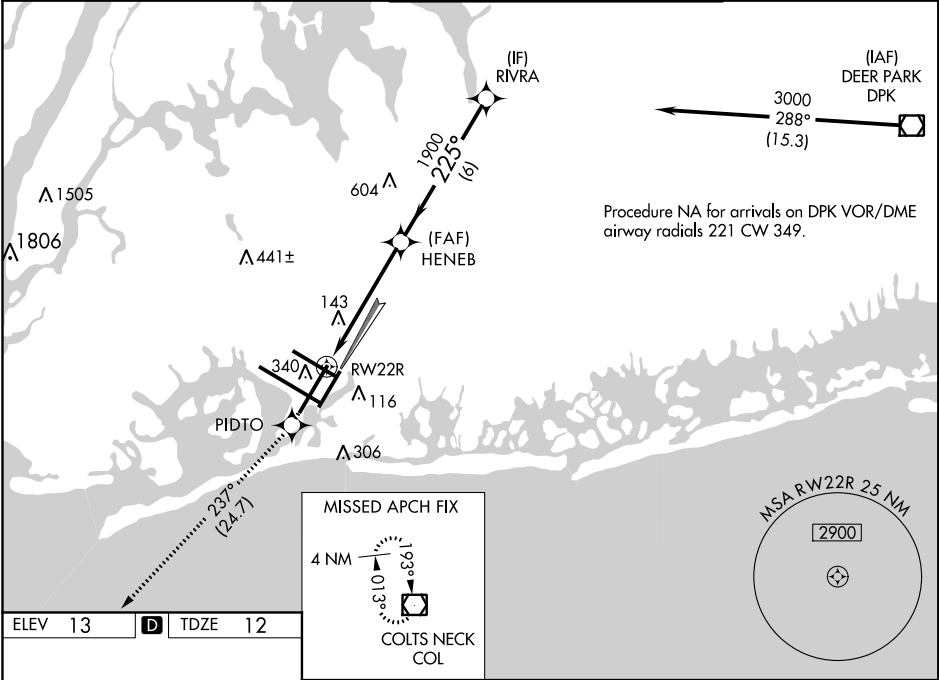
WAAS CH 40019 W22B	APP CRS 225°	Rwy Idg 7795 TDZE 12 Apt Elev 13
--	------------------------	---

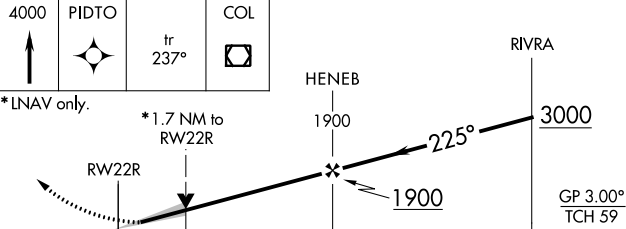
RNAV (GPS) RWY 22R
JOHN F KENNEDY INTL (JFK)

▽ For uncompensated Baro-VNAV systems, LNAV/VNAV NA below -12°C (11°F) or above 54°C (130°F). DME/DME RNP-0.3 NA. Simultaneous approach authorized. LNAV procedure NA during simultaneous operations. Use of FD or AP providing RNAV track guidance required during simultaneous operations.

MISSED APPROACH:
Climb to 4000 direct
PIDTO and on track 237°
to COL VOR/DME and hold.

D-ATIS (ARR/DEP) (ARR-NE) (ARR-SW)			NEW YORK APP CON		KENNEDY TOWER		GND CON	CLNC DEL	CPDLC
128.725	117.7	115.4	128.12	269.0	Rwys 4R/22L and 13L/31R Rwys 4L/22R and 13R/31L	119.1 281.55 123.9 281.55	121.9 348.6	135.05 348.6	



4000 ↑	PIDTO ✦	COL tr 237° ◻			
*LNAV only.					
*1.7 NM to RW22R					
HENEB 1900					
RIVRA 3000					
GP 3.00° TCH 59					
CATEGORY		A	B	C	D
LPV	DA	269/40 257 (300-¾)			
LNAV/ VNAV	DA	501-1½ 489 (500-1%)			
LNAV	MDA	600/50	588 (600-1)	600-1¾	588 (600-1¾)
C CIRCLING		640-1	627 (700-1)	640-1¾ 627 (700-1¾)	660-2 647 (700-2)

NE-2, 22 JUN 2017 to 20 JUL 2017

NE-2, 22 JUN 2017 to 20 JUL 2017