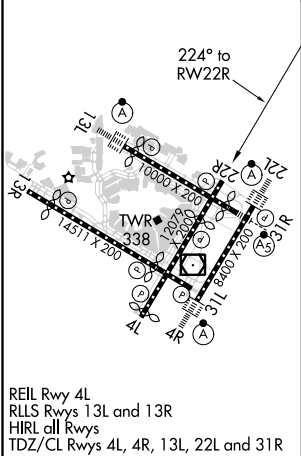
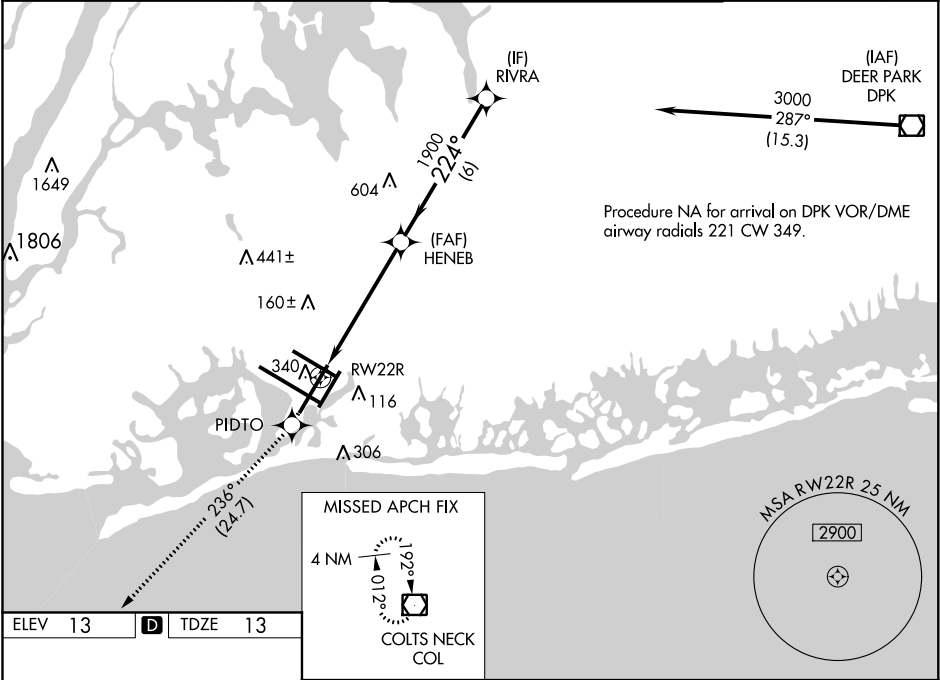



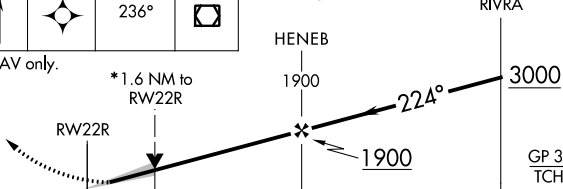



WAAS CH 40019 W22B	APP CRS 224°	Rwy Idg 7794 TDZE 13 Apt Elev 13
--	------------------------	---

RNAV (GPS) RWY 22R
JOHN F KENNEDY INTL (JFK)

RNP APCH. Simultaneous approach authorized. Use of FD or AP providing RNAV track guidance required during simultaneous operations. LNAV procedure NA during simultaneous operations. For uncompensated Baro-VNAV systems, LNAV/VNAV NA below -12°C or above 54°C.			MISSED APPROACH: Climb to 4000 direct PIDTO and on track 236° to COL VOR/DME and hold.		
D-ATIS (ARR/DEP) (ARR-NE) (ARR-SW) 128.725 117.7 115.4	NEW YORK APP CON 128.125 269.0	KENNEDY TOWER Rwys 4R/22L and 13L/31R 119.1 281.55 Rwys 4L/22R and 13R/31L 123.9 281.55	GND CON 121.9 348.6	CLNC DEL 135.05 348.6	CPDLC



4000	PIDTO	COL	VGSi and RNAV glidepath not coincident (VGSi Angle 3.00/TCH 77).	
		tr 236°		
*LNAV only.				
*1.6 NM to RW22R				
				
GP 3.00° TCH 59				
CATEGORY	A	B	C	D
LPV DA	269/40 256 (300-¾)			
LNAV/ VNAV DA	501-1½ 488 (500-1½)			
LNAV MDA	600/55 587 (600-1)		600-1¾ 587 (600-1¾)	
 CIRCLING	640-1 627 (700-1)		680-1¾ 667 (700-1¾)	680-2 667 (700-2)

NE-2, 17 JUN 2021 to 15 JUL 2021

NE-2, 17 JUN 2021 to 15 JUL 2021