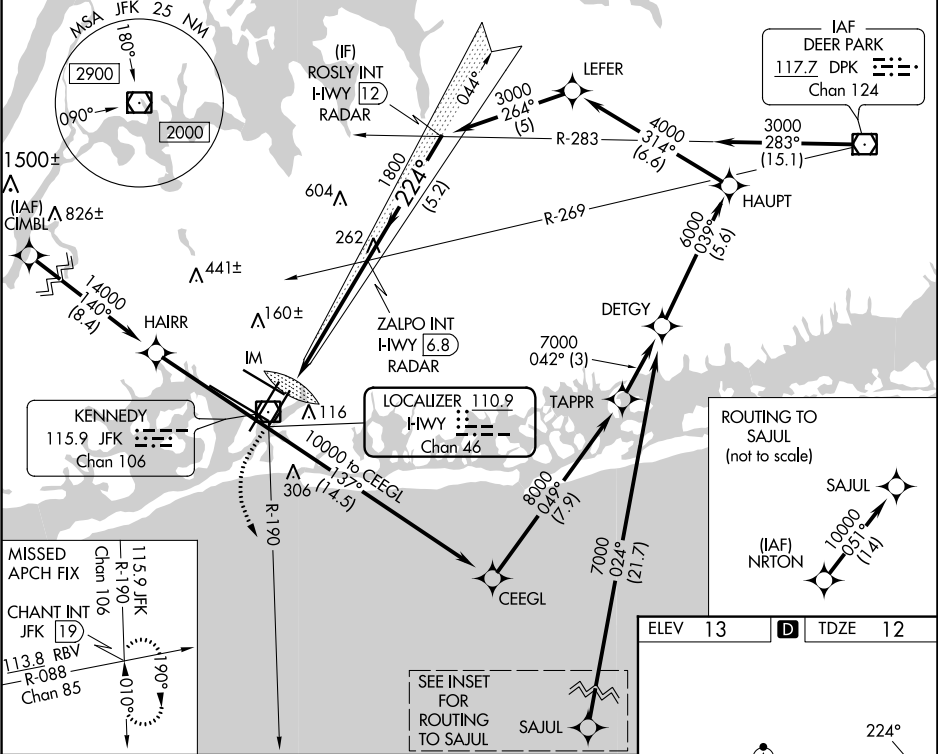


| | | | |
|----------------|-------------|----------|-----------|
| LOC/DME I-HWY | APP CRS | Rwy Idg | 8400 |
| 110.9 | 224° | TDZE | 12 |
| Chan 46 | | Apt Elev | 13 |

ILS or LOC RWY 22L
JOHN F KENNEDY INTL (JFK)

| | | |
|--|-------------|--|
| RNAV 1-GPS or RADAR required for procedure entry. From CIMBL, NRTON: RNAV 1-GPS required. | ALSIF-2 | MISSED APPROACH: Climb to 500 then climbing left turn to 3000 on JFK VOR/DME R-190 to CHANT INT/19 DME and hold. |
| Simultaneous approach authorized. | | |

| | | | | | | |
|---------------------------------------|------------------|--|--------------|-------------|--------------|-------|
| D-ATIS (ARR/DEP) (ARR-NE) (ARR-SW) | NEW YORK APP CON | KENNEDY TOWER Rwys 4R/22L and 13L/31R | 119.1 281.55 | GND CON | CLNC DEL | CPDLC |
| 128.725 117.7 115.4 | 128.125 269.0 | Rwys 4L/22R and 13R/31L | 123.9 281.55 | 121.9 348.6 | 135.05 348.6 | |



| | | | | |
|-------------|--------|---------------|---|-------------------------------|
| 500 | 3000 | CHANT INT | VGSI and ILS glidepath not coincident (VGSI Angle 3.00°/TCH 66). | ROSLEY INT HWY 12 RADAR |
| | | | | |
| * LOC only. | * H-WY | | | |
| 0.2 | 1.2 NM | 4.1 NM | 5.2 NM | GS 3.00° TCH 53 |
| CATEGORY | A | B | C | D |
| S-ILS 22L | 212/18 | 200 (200-1/2) | | |
| S-LOC 22L | 520/24 | 508 (600-1/2) | 520/55 | 508 (600-1) |
| CIRCLING | 640-1 | 627 (700-1) | 680-1 3/4 667 (700-1 3/4) | 680-2 667 (700-2) |

| | |
|--------------------------------------|--------------------------|
| ELEV 13 | TDZE 12 |
| RLLS Rwys 13L and 13R | |
| HIRL all Rwys | |
| TDZ/CL Rwys 4L, 4R, 13L, 22L and 31R | |
| FAF to MAP 5.5 NM | |
| Knots | 60 90 120 150 180 |
| Min:Sec | 5:30 3:40 2:45 2:12 1:50 |