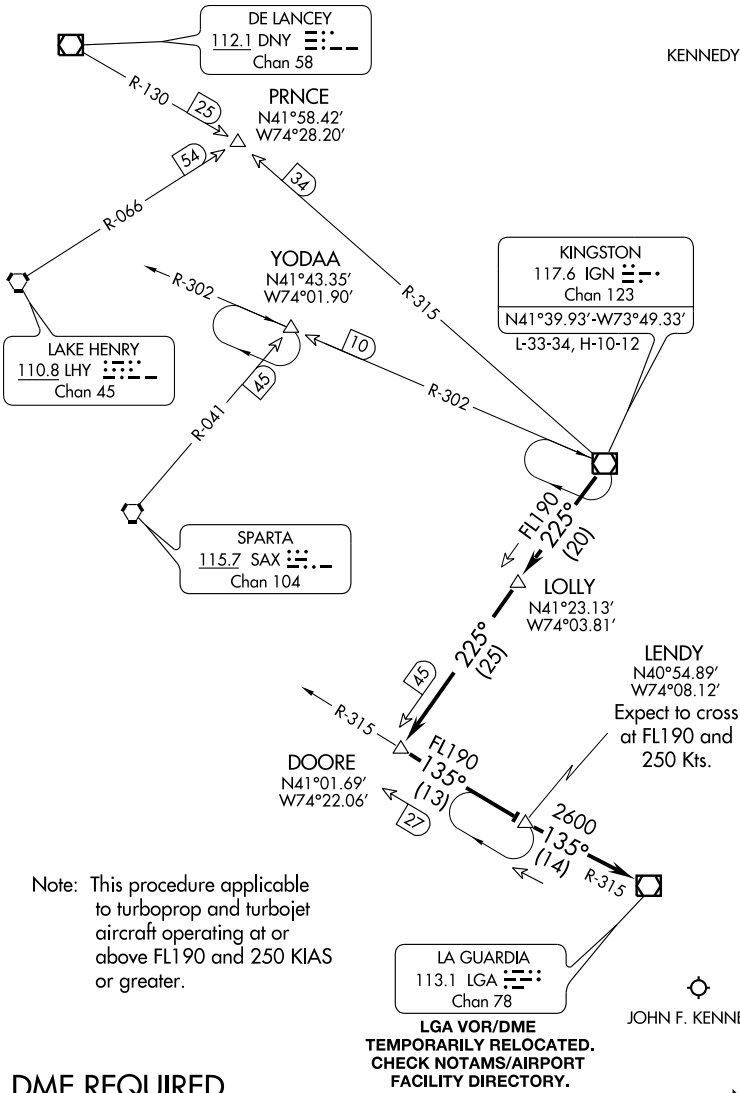


KINGSTON EIGHT ARRIVAL

NEW YORK, NEW YORK

NEW YORK APP CON  
125.7 269.0  
KENNEDY INTL ATIS ARR 128.725  
(NE) 117.7  
(SW) 115.4



DME REQUIRED

ARRIVAL ROUTE DESCRIPTION

From over IGN VOR/DME via IGN R-225 to DOORE INT (MEA FL190), then via LGA R-315 to LENDY/14 DME (MEA FL190), then via LGA R-315 to LGA VOR/DME (MEA 2600). Expect radar vectors to final approach course after LGA VOR/DME.

KINGSTON EIGHT ARRIVAL

NEW YORK, NEW YORK

NE-2, 05 JUN 2008 to 03 JUL 2008

NE-2, 05 JUN 2008 to 03 JUL 2008