

LOC/DME I-HWY	APP CRS	Rwy Idg	8400
110.9	225°	TDZE	13
Chan 46		Apt Elev	13

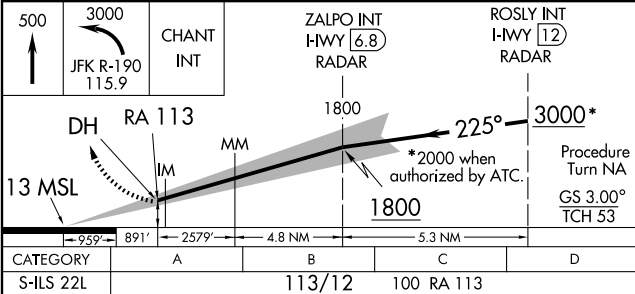
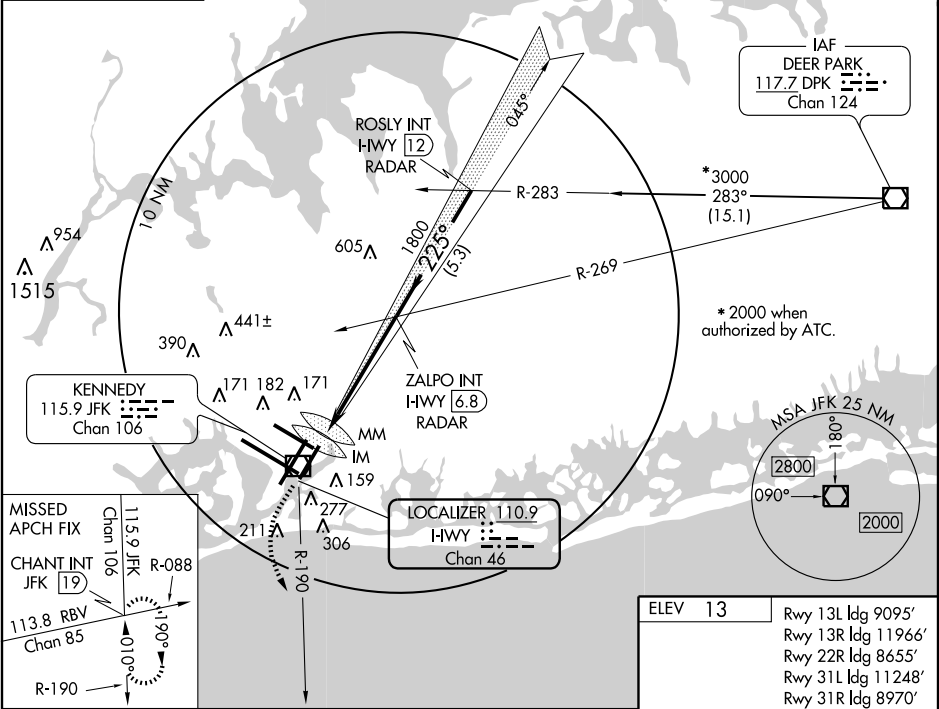
ILS RWY 22L (CAT II)
NEW YORK / JOHN F. KENNEDY INTL (JFK)





MISSED APPROACH: Climb to 500 then climbing left turn to 3000 via JFK R-190 to CHANT Int/19 DME and hold.

ARR	ATIS (NE) (SW)	NEW YORK APP CON	KENNEDY TOWER	GND CON	CLNC DEL
128.725	117.7 115.4	127.4 269.0	Rwys 4R/22L and 13L/31R 119.1 281.55 Rwys 4L/22R and 13R/31L 123.9 281.55	121.9 348.6	135.05
DEP					
115.1					



CATEGORY II ILS - SPECIAL AIRCREW & AIRCRAFT CERTIFICATION REQUIRED

NE-2, 05 JUN 2008 to 03 JUL 2008

NE-2, 05 JUN 2008 to 03 JUL 2008