



NEW YORK, NEW YORK

AL-610 (FAA)

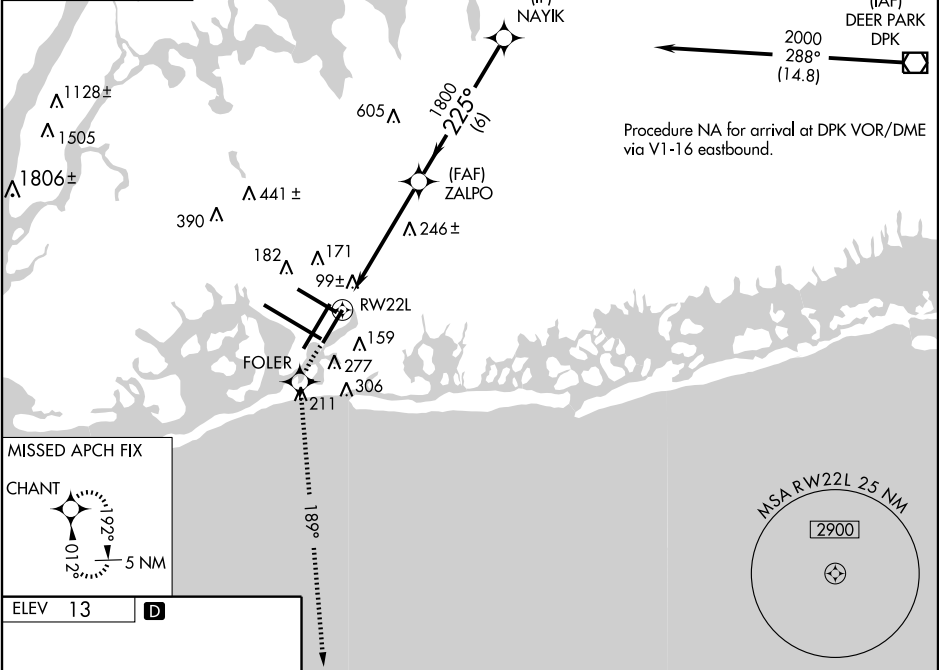
WAAS CH 97318 W22A	APP CRS 225°	Rwy Idg 8400 TDZE 13 Apt Elev 13
--	------------------------	---


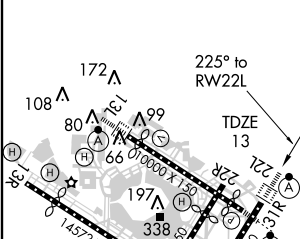
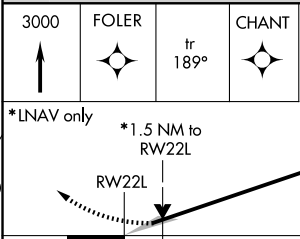
RNAV (GPS) Y RWY 22L

NEW YORK / JOHN F. KENNEDY INTL (JFK)

 For uncompensated Baro-VNAV systems, LNAV/VNAV NA below -13°C (8°F) or above 49°C (120°F). DME/DME RNP-0.3 NA.	ALSF-2 	MISSED APPROACH: Climb to 3000 direct FOLER and via 189° track to CHANT and hold.
---	---	---

ATIS (NE) (SW) 128.725 117.7 115.4 DEP 115.1	NEW YORK APP CON 127.4 269.0	KENNEDY TOWER Rwys 4R/22L and 13L/31R 119.1 281.55 Rwys 4L/22R and 13R/31L 123.9 281.55	GND CON 121.9 348.6	CLNC DEL 135.05 348.6
--	--	---	-------------------------------	---------------------------------



ELEV 13		3000	FOLER	tr 189°	CHANT	VGSI and RNAV glidepath not coincident.	Procedure Turn NA
							2000
*LNAV only		*1.5 NM to RWY 22L					GS 3.00° TCH 53
CATEGORY	A	B	C	D			
LPV DA	270/24		257 (300-½)				
LNAV/VNAV DA	420/50		407 (500-1)				
LNAV MDA	560/24 547 (600-½)		560/50 547 (600-1)		560/60 547 (600-1¼)		
CIRCLING	640-1 627 (700-1)		640-1¼ 627 (700-1¼)		640-2 627 (700-2)		

NEW YORK, NEW YORK
Amdt 1B 10154

NEW YORK / JOHN F. KENNEDY INTL (JFK)
RNAV (GPS) Y RWY 22L

40°38'N - 73°47'W

NE-2, 03 JUN 2010 to 01 JUL 2010

NE-2, 03 JUN 2010 to 01 JUL 2010