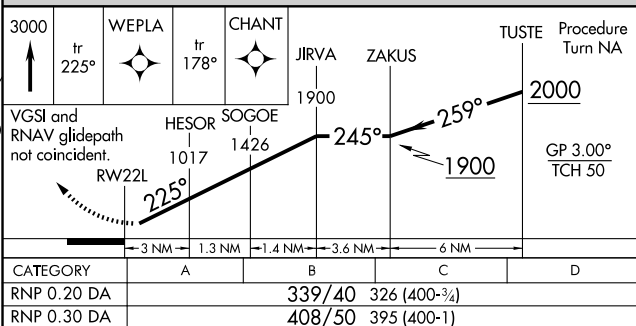
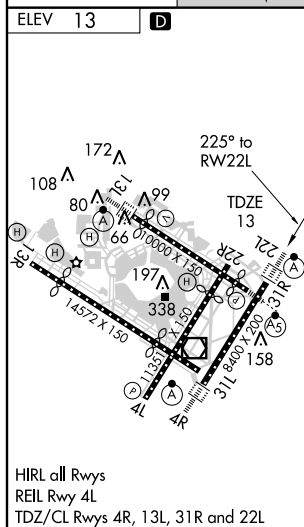


RNAV (RNP) Z RWY 22L
NEW YORK / JOHN F. KENNEDY INTL (JFK)

MISSED APPROACH: Climb to 3000 via 225° track to WEPLA and via 178° track to CHANT and hold.

	CLNC DEL
6	135.05 348.6



**SPECIAL AIRCRAFT AND AIRCREW
AUTHORIZATION REQUIRED**