

LOC/DME I-HWY	APP CRS	Rwy Idg	8400
110.9	225°	TDZE	13
Chan 46		Apt Elev	13

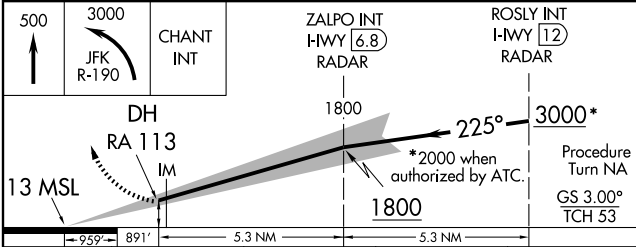
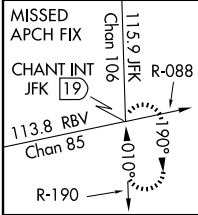
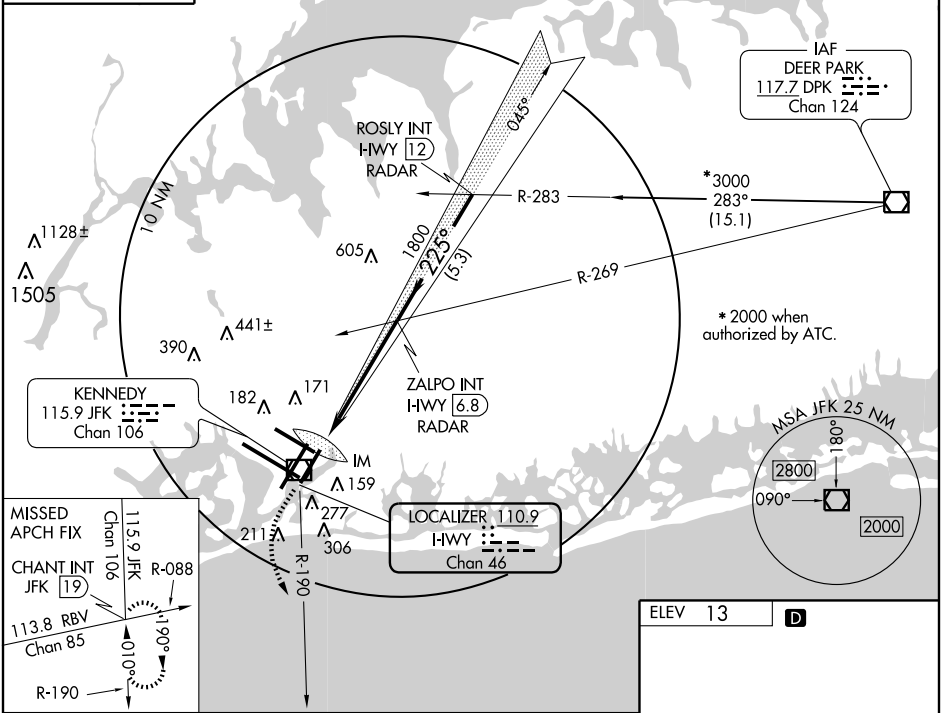
ILS RWY 22L (CAT II)
NEW YORK / JOHN F. KENNEDY INTL (JFK)



ALS-2

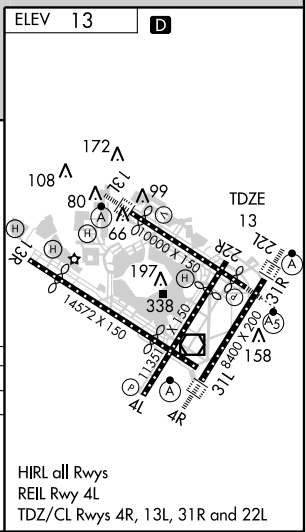
MISSED APPROACH: Climb to 500 then climbing left turn to 3000 via JFK R-190 to CHANT INT/19 DME and hold.

ARR	ATIS	NEW YORK APP CON	KENNEDY TOWER	GND CON	CLNC DEL
(NE) (SW)					
128.725	117.7	127.4	269.0	121.9	348.6
DEP			Rwys 4R/22L and 13L/31R		
115.1			Rwys 4L/22R and 13R/31L	135.05	348.6



CATEGORY	A	B	C	D
S-ILS 22L	RA 113/12	100	DA 113	

CATEGORY II ILS - SPECIAL AIRCREW & AIRCRAFT CERTIFICATION REQUIRED



NE-2, 03 JUN 2010 to 01 JUL 2010

NE-2, 03 JUN 2010 to 01 JUL 2010