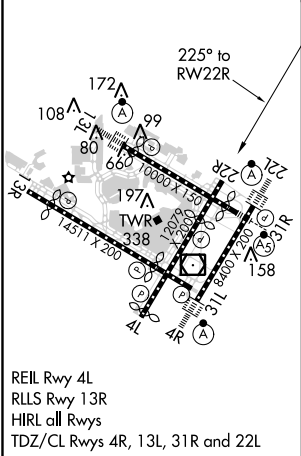
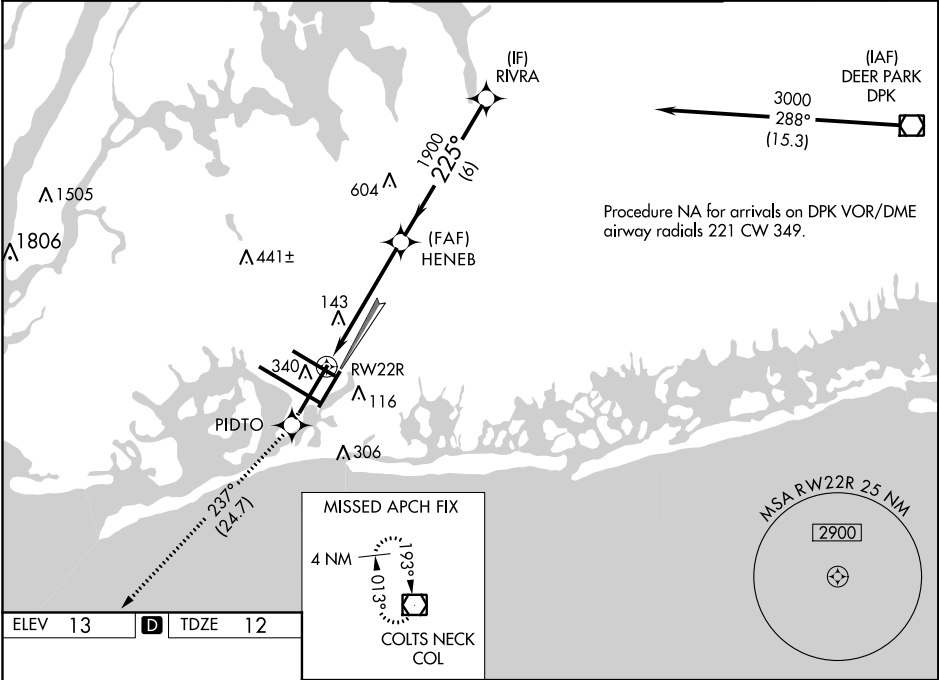




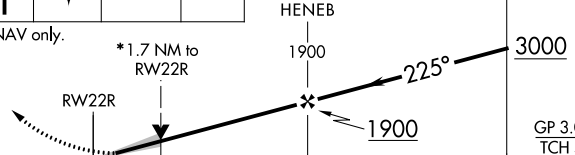
WAAS CH 40019 W22B	APP CRS 225°	Rwy Idg 7795 TDZE 12 Apt Elev 13
--	------------------------	---

RNAV (GPS) RWY 22R
JOHN F KENNEDY INTL (JFK)

<p>▼ For uncompensated Baro-VNAV systems, LNAV/VNAV NA below -12°C (11°F) or above 54°C (130°F). DME/DME RNP-0.3 NA. Simultaneous approach authorized. LNAV procedure NA during simultaneous operations. Use of FD or AP providing RNAV track guidance required during simultaneous operations.</p>	<p>MISSED APPROACH: Climb to 4000 direct PIDTO and on track 237° to COL VOR/DME and hold.</p>
---	---

D-ATIS (ARR/DEP) (ARR-NE) (ARR-SW) 128.725 117.7 115.4	NEW YORK APP CON 128.125 269.0	KENNEDY TOWER Rwys 4R/22L and 13L/31R 119.1 281.55 Rwys 4L/22R and 13R/31L 123.9 281.55	GND CON 121.9 135.05 348.6 348.6	CLNC DEL 135.05 348.6	CPDLC
---	--	---	--	---------------------------------	-------



4000 ↑	PIDTO 	COL tr 237° 			
* LNAV only.					
* 1.7 NM to RW22R					
GP 3.00° TCH 59					
CATEGORY		A	B	C	D
LPV	DA	269/40 257 (300-¾)			
LNAV/ VNAV	DA	501-1½ 489 (500-1%)			
LNAV MDA		600/50 588 (600-1)		600-1¾ 588 (600-1¾)	
C CIRCLING		640-1 627 (700-1)		640-1¾ 627 (700-1¾)	660-2 647 (700-2)

NE-2, 24 MAY 2018 to 21 JUN 2018

NE-2, 24 MAY 2018 to 21 JUN 2018