

WAAS CH <b>97318</b> <b>W22A</b>	APP CRS <b>224°</b>	Rwy Idg <b>8400</b> TDZE <b>12</b> Apt Elev <b>13</b>
--	------------------------	---

RNAV (GPS) Y RWY 22L

JOHN F KENNEDY INTL (JFK)

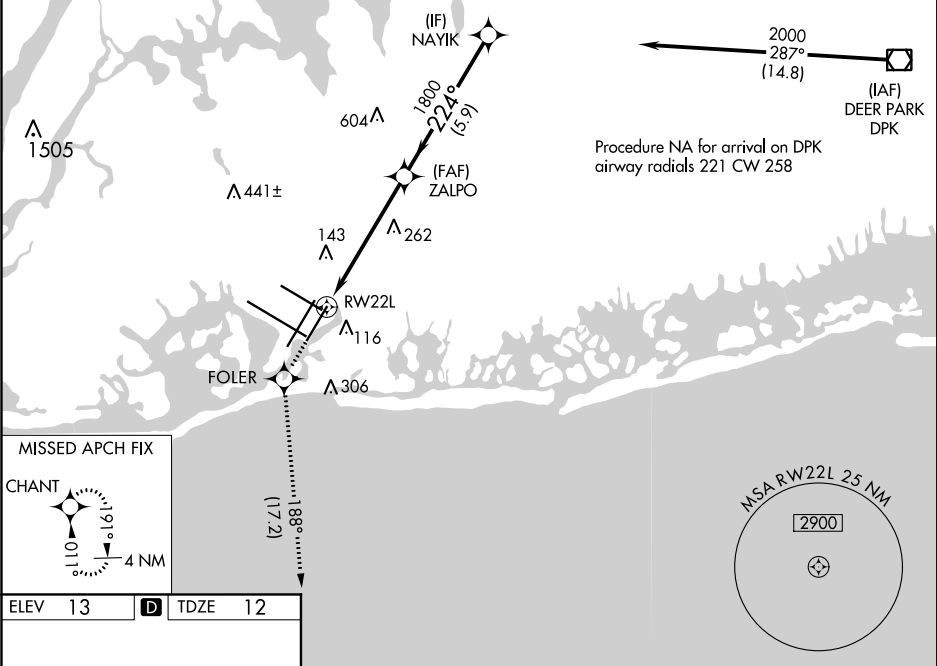
RNP APCH.

Simultaneous approach authorized. LNAV procedure NA during simultaneous operations. Use of FD or AP providing RNAV track guidance required during simultaneous operations. For uncompensated Baro-VNAV systems, LNAV/VNAV NA below -12°C or above 54°C. For inop ALS, increase LNAV/VNAV all Cats visibility to RVR 6000.

ALS F-2

MISSED APPROACH: Climb to 3000 direct FOLER and on track 188° to CHANT and hold.

D-ATIS (ARR/DEP) (ARR-NE) (ARR-SW)			NEW YORK APP CON		KENNEDY TOWER		GND CON	CLNC DEL	CPDLC
128.725	117.7	115.4	128.125	269.0	Rwys 4R/22L and 13L/31R Rwys 4L/22R and 13R/31L	119.1 281.55 123.9 281.55	121.9 348.6	135.05 348.6	



ELEV 13 D TDZE 12

REIL Rwy 4L  
RLS Rwys 13L and 13R  
HIRL all Rwys  
TDZ/CL Rwys 4L, 4R, 13L, 22L and 31R

3000	FOLER	tr 188°	CHANT	VGSI and RNAV glidepath not coincident (VGSI Angle 3.00/TCH 66).	
*LNAV only.		*1.5 NM to RWY22L	ZALPO	1800	NAYIK
RWY22L		1.5	4 NM	5.9 NM	2000
GP 3.00° TCH 53					
CATEGORY	A		B	C	D
LPV DA	269/18		257 (300-½)		
LNAV/VNAV DA	419/50		407 (500-1)		
LNAV MDA	560/24	548 (600-½)	560/60	548 (600-1¼)	
CIRCLING	640-1	627 (700-1)	680-1¾ 667 (700-1¾)	680-2 667 (700-2)	