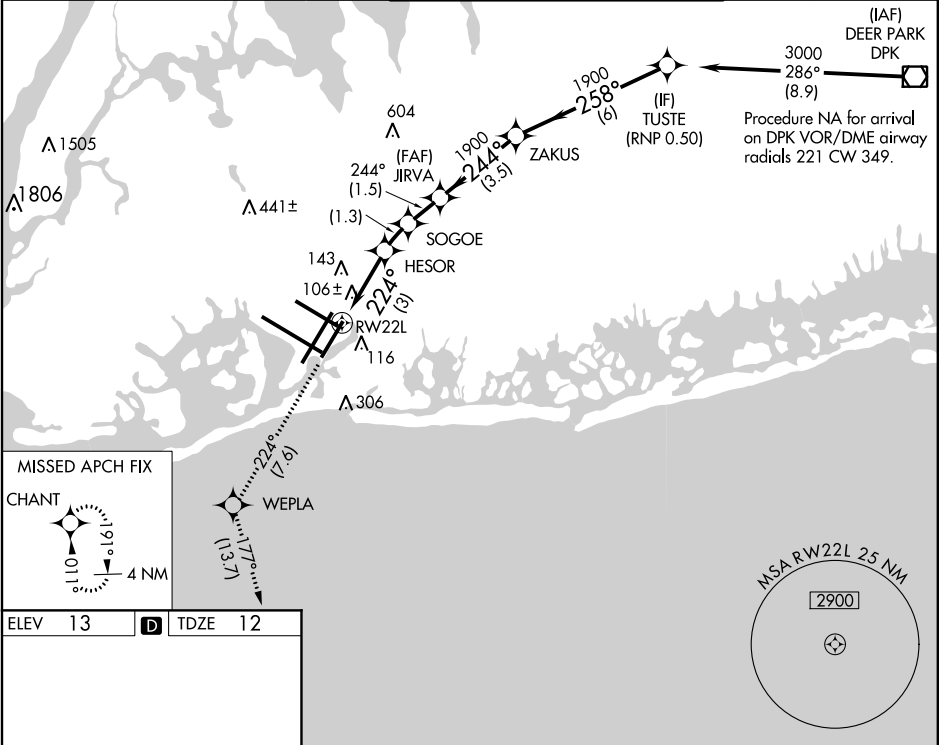


APP CRS	Rwy Idg	8400
224°	TDZE	12
	Apt Elev	13

RNAV (RNP) Z RWY 22L
JOHN F KENNEDY INTL (JFK)

RF required. RNP AR APCH.	ALSIF-2	MISSED APPROACH: Climb to 3000 on track 224° to WEPLA and on track 177° to CHANT and hold.
For uncompensated Baro-VNAV systems, procedure NA below -12°C (11°F) or above 54°C (130°F). Simultaneous approach authorized. Use of FD or AP providing RNAV track guidance required during simultaneous operations. For inop ALS, increase RNP 0.20 all Cats visibility to RVR 5500, increase RNP 0.30 all Cats visibility to RVR 6000.		

D-ATIS (ARR/DEP) (ARR-NE) (ARR-SW)	NEW YORK APP CON	KENNEDY TOWER Rwys 4R/22L and 13L/31R	119.1	281.55	GND CON	CLNC DEL	CPDLC
128.725 117.7 115.4	128.125 269.0	Rwys 4L/22R and 13R/31L	123.9	281.55	121.9	135.05	
					348.6	348.6	



--