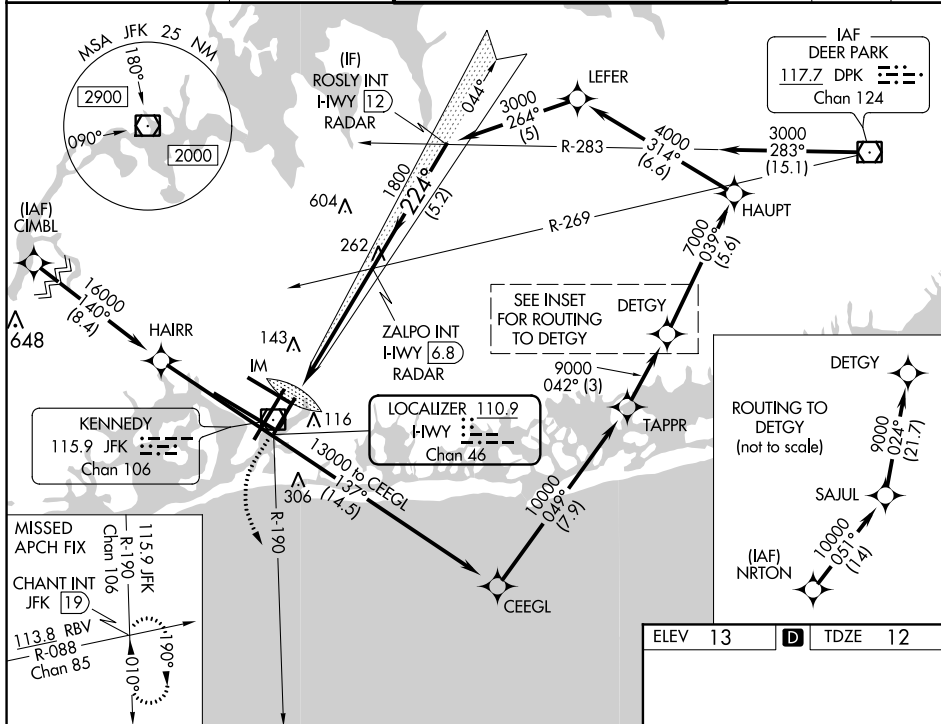


ILS RWY 22L (CAT II & III)
JOHN F KENNEDY INTL (JFK)

MISSED APPROACH: Climb to 500 then climbing left turn to 3000 on JFK VOR/DME R-190 to CHANT INT/19 DME and hold.



D-ATIS (ARR/DEP) (ARR-NE) (ARR-SW)			NEW YORK APP CON			KENNEDY TOWER			GND CON	CLNC DEL	CPDLC
128.725	117.7	115.4	128.125	269.0		Rwys 4R/22L and 13L/31R	119.1	281.55	121.9	135.05	
						Rwys 4L/22R and 13R/31L	123.9	281.55	348.6	348.6	



VGSI and ILS glidepath not coincident
(VGSI Angle 3.00/TCH 66).

ZALPO INT
I-HWY 68
RADAR

ROSLY INT
I-HWY 12
RADAR

IM
113

224°

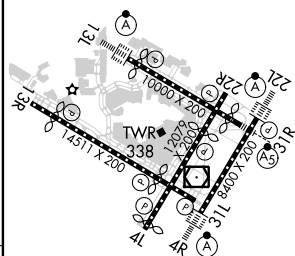
3000

1800

GS 3.00°
TCH 53

CATEGORY	A	B	C	D
S-ILS 22L	CAT II RA 113/12 100 DA 112			
S-ILS 22L	CAT III RVR 06			

CATEGORY II & III ILS - SPECIAL AIRCREW
& AIRCRAFT CERTIFICATION REQUIRED



REIL Rwy 4L
RLS Rwy 13L and 13R
HIRL all Rwy
TDZ/CL Rwy 4L, 4R, 13L, 22L and 31R