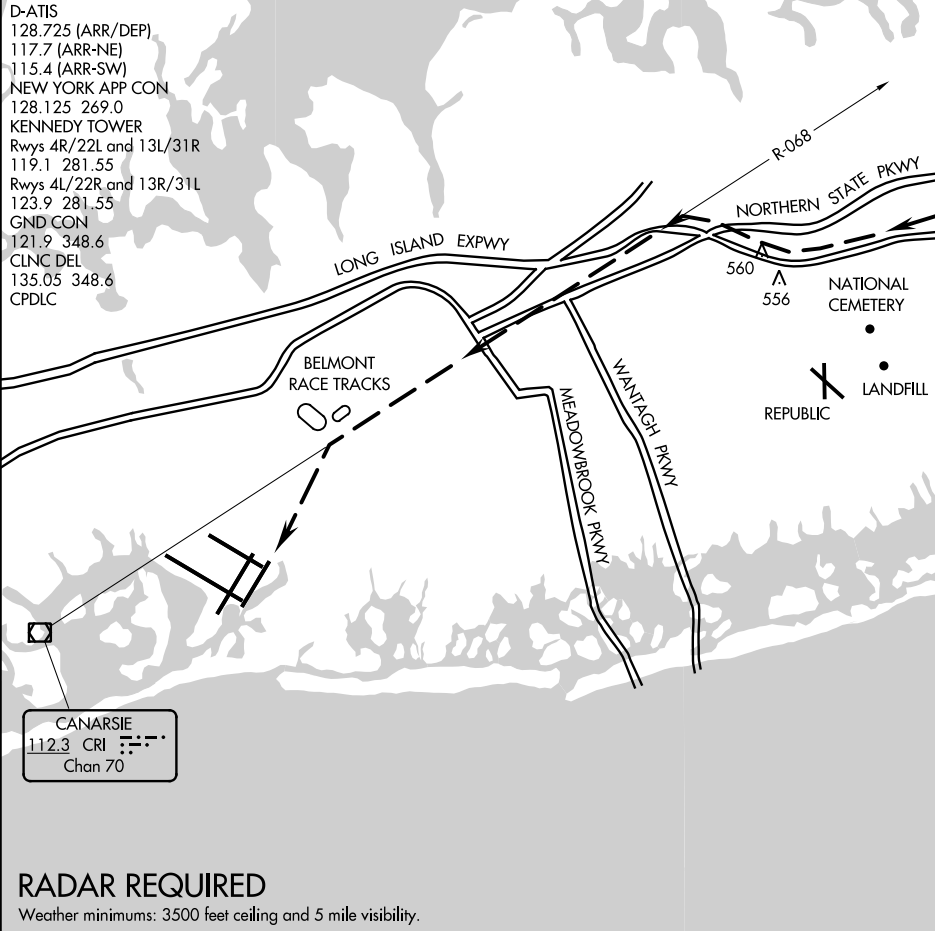


D-ATIS  
128.725 (ARR/DEP)  
117.7 (ARR-NE)  
115.4 (ARR-SW)  
NEW YORK APP CON  
128.125 269.0  
KENNEDY TOWER  
Rwys 4R/22L and 13L/31R  
119.1 281.55  
Rwys 4L/22R and 13R/31L  
123.9 281.55  
GND CON  
121.9 348.6  
CLNC DEL  
135.05 348.6  
CPDLC



RADAR REQUIRED

Weather minimums: 3500 feet ceiling and 5 mile visibility.

NM	1	2	3	4	5	6	7	8	9	10	11	12	13	14	15	16	17	18	19	20	21	22	23	24	25
----	---	---	---	---	---	---	---	---	---	----	----	----	----	----	----	----	----	----	----	----	----	----	----	----	----

BELMONT VISUAL RUNWAY 22L

When cleared for the Belmont Visual Approach to Runway 22L, follow the Long Island Expressway westbound until intercepting CRI R-068 at 3000'. Navigate on CRI R-068 till abeam Belmont Race Track at 1600'. Remain east of Belmont Race Track and proceed direct to JFK Runway 22L.

NE-2, 21 MAY 2020 to 18 JUN 2020

NE-2, 21 MAY 2020 to 18 JUN 2020