

APP CRS	Rwy Idg	8400
224°	TDZE	12
	Apt Elev	13

RNAV (RNP) Z RWY 22L

JOHN F KENNEDY INTL (JFK)

RF required. RNP AR APCH.

For uncompensated Baro-VNAV systems, procedure NA below -12°C (11°F) or above 54°C (130°F). Simultaneous approach authorized. Use of FD or AP providing RNAV track guidance required during simultaneous operations. For inop ALS, increase RNP 0.20 all Cats visibility to RVR 5500, increase RNP 0.30 all Cats visibility to RVR 6000.

ALS-F-2



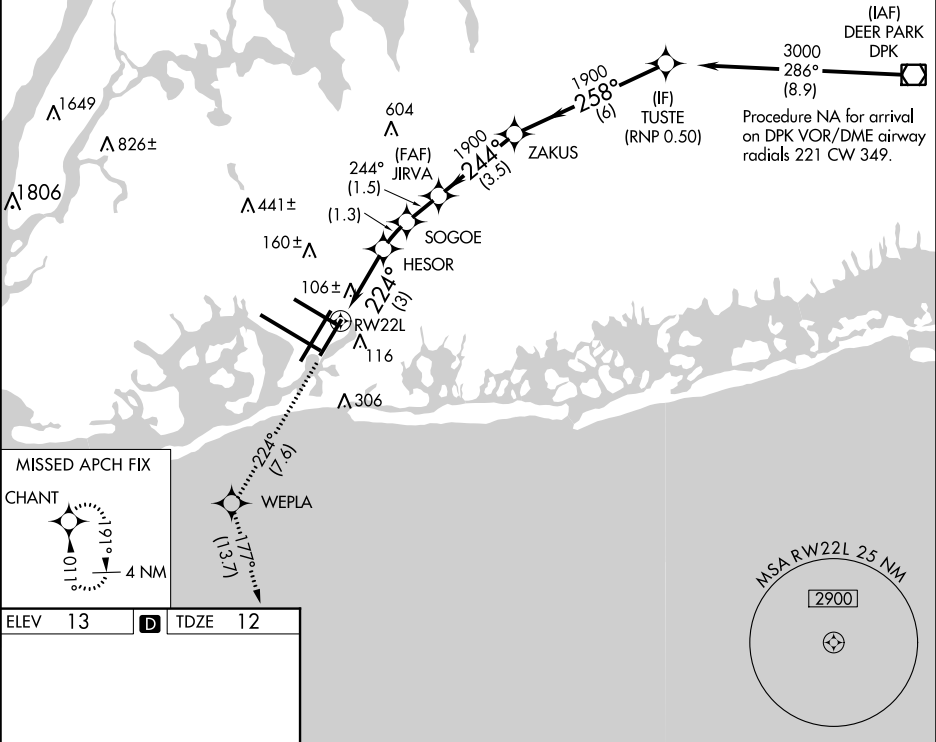
MISSED APPROACH: Climb to 3000 on track 224° to WEPLA and on track 177° to CHANT and hold.

D-ATIS	NEW YORK APP CON
(ARR/DEP) (ARR-NE) (ARR-SW)	(ARR-DEP) (ARR-NE) (ARR-SW)
128.725 117.7 115.4	128.125 269.0

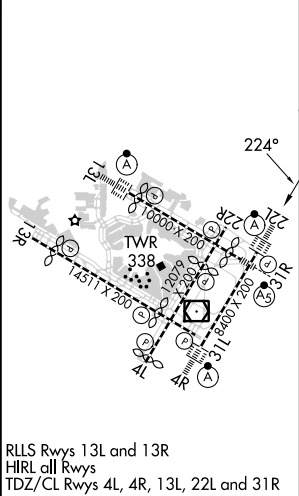
NEW YORK APP CON
(ARR-DEP) (ARR-NE) (ARR-SW)
128.125 269.0

KENNEDY TOWER
Rwys 4R/22L and 13L/31R
Rwys 4L/22R and 13R/31L
119.1 281.55
123.9 281.55

GND CON	CLNC DEL	CPDLC
121.9 286°	135.05 348.6	



ELEV	13	TDZE	12
------	----	------	----



RLS Rwys 13L and 13R
HIRL all Rwys
TDZ/CL Rwys 4L, 4R, 13L, 22L and 31R

3000	tr 224°	WEPLA	tr 177°	CHANT	VGSI and RNAV glidepath not coincident (VGSI Angle 3.00/TCH 66).
JIRVA	ZAKUS	TUSTE			
1900	1900	3000			
HESOR	SOGOE				
1019	1429				
RW22L					
224°	244°	1900			
3 NM	1.3 NM	1.5 NM	3.5 NM	6 NM	
CATEGORY	A	B	C	D	
RNP 0.20 DA	361/40	349 (400-¾)			
RNP 0.30 DA	421/40	409 (500-¾)			
AUTHORIZATION REQUIRED					