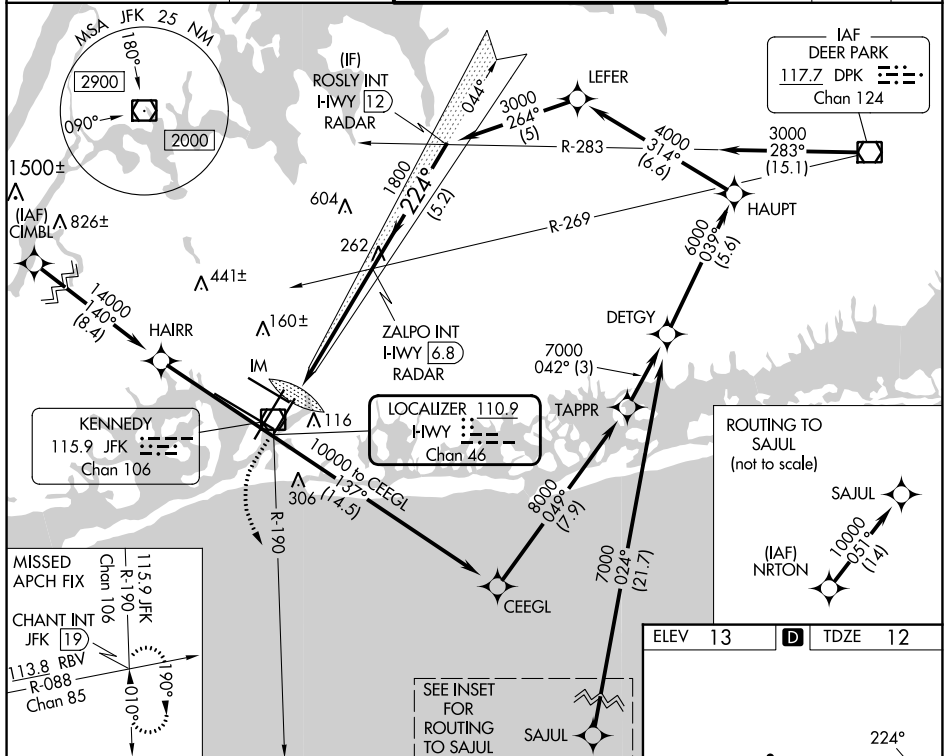


ILS or LOC RWY 22L
JOHN F KENNEDY INTL (JFK)

MISSED APPROACH: Climb to 500 then climbing left turn to 3000 on JFK VOR/DME R-190 to CHANT INT/19 DME and hold.

T Simultaneous approach authorized.

D-ATIS (ARR/DEP) (ARR-NE) (ARR-SW)			NEW YORK APP CON		KENNEDY TOWER			GND CON	CLNC DEL	CPDLC
128.725	117.7	115.4	128.125	269.0	Rwys 4R/22L and 13L/31R	119.1	281.55	121.9	135.05	
					Rwys 4L/22R and 13R/31L	123.9	281.55	348.6	348.6	



<div style="display: flex; justify-content: space-around;"> <div>500 ↑</div> <div>3000 JFK R-190</div> </div>	CHANT INT		VGS1 and ILS glidepath not coincident (VGS1 Angle 3.00/TCH 66).		ROSLY INT HWY 12 RADAR
* LOC only.	* I-HWY 1.4	* I-HWY 2.8	1800 I-HWY 5.8 RADAR	224°	3000 GS 3.00° TCH 53
CATEGORY	A		B	C	D
S-ILS 22L	212/18 200 (200-1/2)				
S-LOC 22L	520/24	508 (600-1/2)	520/55	508 (600-1)	
C CIRCLING	640-1	627 (700-1)	680-13/4 667 (700-13/4)	680-2 667 (700-2)	

