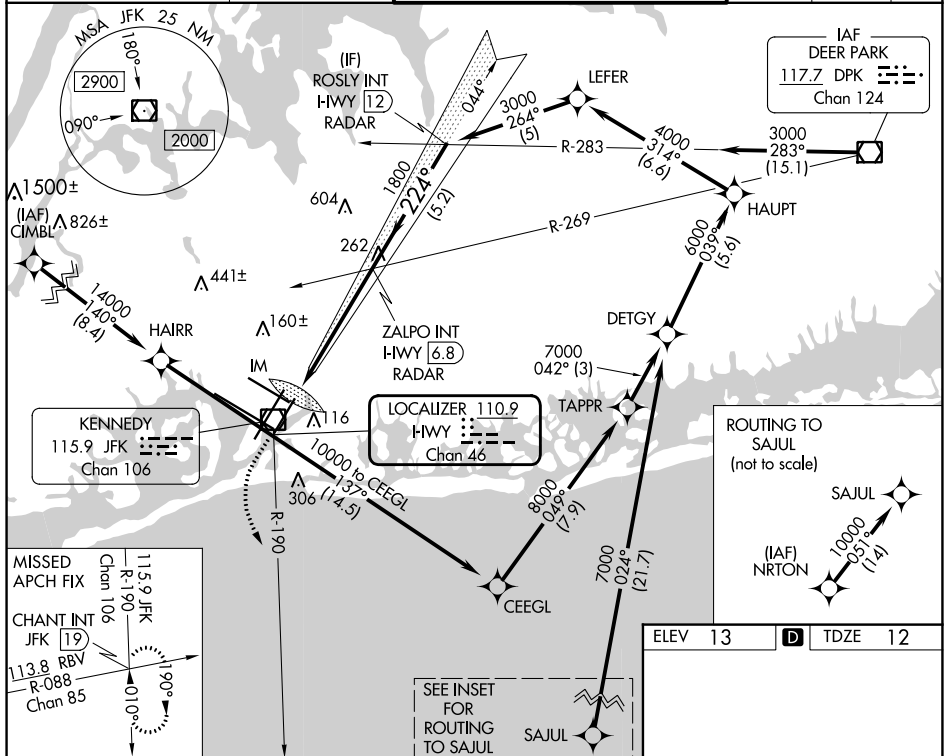


ILS RWY 22L (CAT II & III)
JOHN F KENNEDY INTL (JFK)

MISSED APPROACH: Climb to 500 then climbing left turn to 3000 on JFK VOR/DME R-190 to CHANT INT/19 DME and hold.

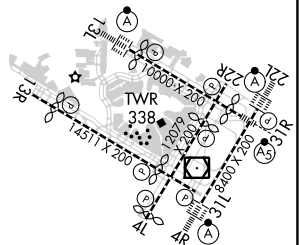
T Simultaneous approach authorized.

D-ATIS (ARR/DEP) (ARR-NE) (ARR-SW)	NEW YORK APP CON	KENNEDY TOWER		GND CON	CLNC DEL	CPDLC
128.725 117.7 115.4	128.125 269.0	Rwys 4R/22L and 13L/31R Rwys 4L/22R and 13R/31L	119.1 281.55 123.9 281.55	121.9 348.6	135.05 348.6	



500 ↑	3000 JFK R-190	CHANT INT	VGS1 and ILS glidepath not coincident (VGS1 Angle 3.00°/TCH 66).			ROSLY INT I-HWY 12 RADAR
IM 113		ZALPO INT I-HWY 6.8 RADAR 1800		224°	3000	
958'		5.5 NM		5.2 NM		
GS 3.00° TCH 53						
CATEGORY	A	B	C	D		
S-ILS 22L	CAT II RA 113/12 100 DA 112					
S-ILS 22L	CAT III RVR 06					

CATEGORY II & III ILS - SPECIAL AIRCREW
& AIRCRAFT CERTIFICATION REQUIRED



RLS Rwy's 13L and 13R
HRL all Rwy's
TDZ/CL Rwy's 4L, 4R, 13L, 22L and 31R