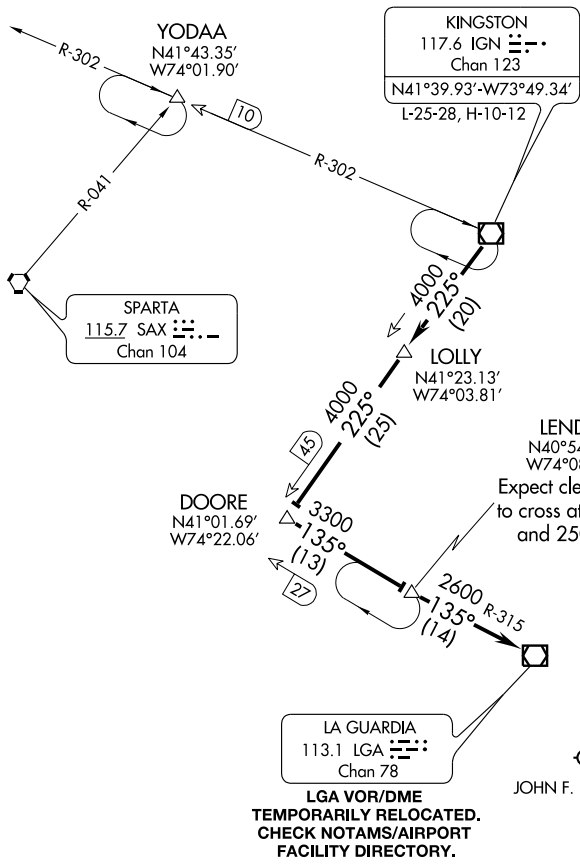


KINGSTON SEVEN ARRIVAL

NEW YORK, NEW YORK

NEW YORK APP CON  
125.7 269.0  
KENNEDY INTL ATIS ARR 128.725  
(NE) 117.7  
(SW) 115.4



Note: This procedure applicable to turboprop and turbojet aircraft operating at or above FL 190 and 250 Kts IAS or greater.

NOTE: Chart not to scale.

From over IGN VOR/DME via IGN R-225 to DOORE INT then via LGA R-315 to LENDY INT then via LGA R-315 to LGA VOR/DME. Expect radar vectors to final approach course after LGA VOR/DME.

KINGSTON SEVEN ARRIVAL

NEW YORK, NEW YORK

NE-2, 10 MAY 2007 to 07 JUN 2007

NE-2, 10 MAY 2007 to 07 JUN 2007