

NEW YORK, NEW YORK

AL-610 (FAA)

VOR/DME JFK	APP CRS	Rwy ldg	8400
115.9	232°	TDZE	13
Chan 106		Apt Elev	13

# VOR/DME RWY 22L

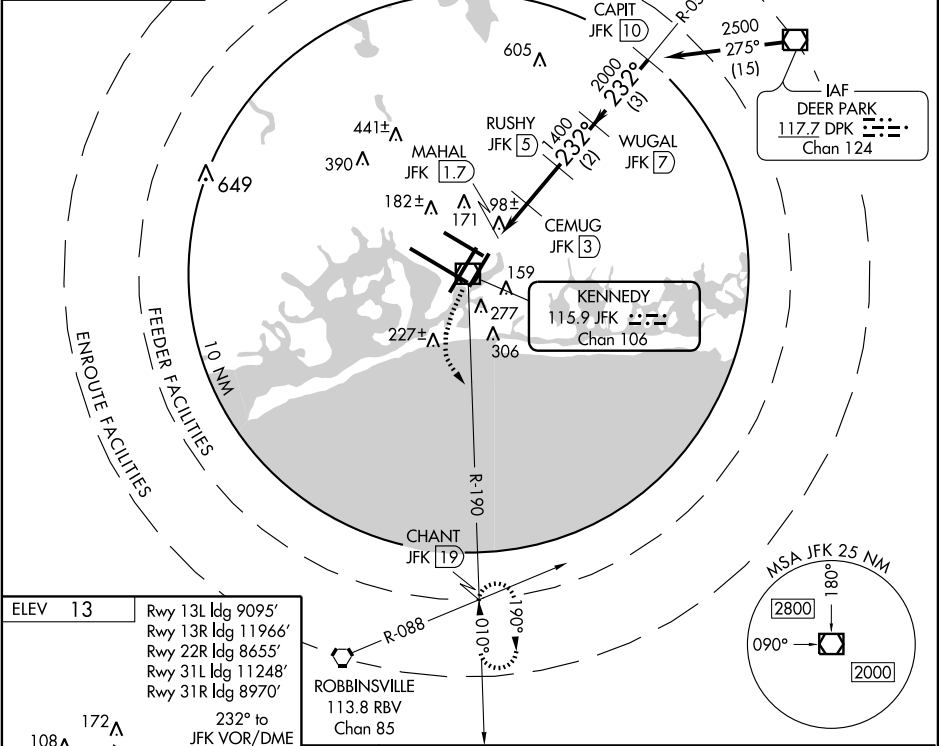
NEW YORK / JOHN F. KENNEDY INTL (JFK)



ALSF-2

MISSED APPROACH: Climbing left turn to 3000  
via JFK R-190 to CHANT Int/19 DME and hold.

ARR	ATIS (NE) (SW)	NEW YORK APP CON	KENNEDY TOWER	GND CON	CLNC DEL
128.725	117.7 115.4	127.4 269.0	Rwys 4R/22L and 13L/31R 119.1 281.55 Rwys 4L/22R and 13R/31L 123.9 281.55	121.9 348.6	135.05
DEP					
115.1					



ELEV 13

Rwy 13L ldg 9095'  
Rwy 13R ldg 11966'  
Rwy 22R ldg 8655'  
Rwy 31L ldg 11248'  
Rwy 31R ldg 8970'

232° to JFK VOR/DME

TDZE 13

REIL Rwy 4L  
HIRL Rwys 4L-22R  
4R-22L, 13R-31L, and 13L-31R  
TDZ/CL Rwys 4R, 13L, 31R and 22L

3000

CHANT INT

CEMUG JFK [3]

RUSHY JFK [5]

WUGAL JFK [7]

CAPIT JFK [10]

JFK R-190 115.9

VOR/DME

MAHAL JFK [1.7]

JFK [2.4]

232°

2500

2000

1400

600

3.14°

TCH 69

0.6 0.7 0.6 2 NM 2 NM 3 NM

CATEGORY	A	B	C	D
S-22L	440/24 427 (500-½)		440/40 427 (500-¾)	440/50 427 (500-1)
CIRCLING	640-1 627 (700-1)		640-1¾ 627 (700-1¾)	640-2 627 (700-2)

Procedure Turn NA

NEW YORK, NEW YORK  
Amdt 4D 08045

# VOR/DME RWY 22L

NEW YORK / JOHN F. KENNEDY INTL (JFK)

40°38'N - 73°47'W

NE-2, 08 MAY 2008 to 05 JUN 2008

NE-2, 08 MAY 2008 to 05 JUN 2008