

AL-610 (FAA)

WAAS CH 97318 W22A	APP CRS 225°	Rwy Idg 8400 TDZE 13 Apt Elev 13
--	------------------------	---

RNAV (GPS) RWY 22L

NEW YORK / JOHN F. KENNEDY INTL (JFK)



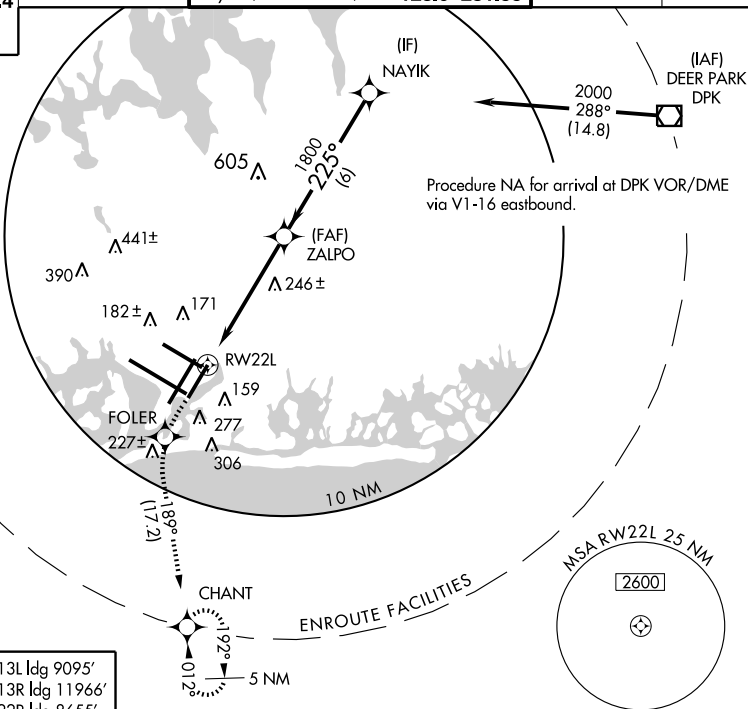
DME/DME RNP -0.3 NA. Baro-VNAV NA
below -15°C (5°F). For inoperative ALSF-2,
increase LPV all CAT's visibility to RVR 4000.

ALSF-2

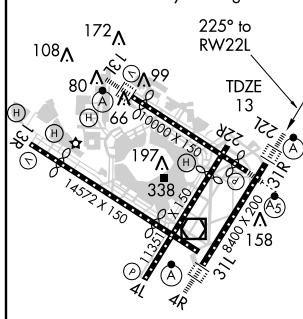


MISSED APPROACH: Climb to 3000 direct FOLER and via 189° track to CHANT and hold.

ARR	ATIS (NE)	(SW)	NEW YORK APP CON		KENNEDY TOWER		GND CON	CINC DEL
128.725	117.7	115.4	127.4	269.0	Rwys 4R/22L and 13L/31R	119.1 281.55	121.9 348.6	135.05
DEP					Rwys 4L/22R and 13R/31L	123.9 281.55		
115.1								



ELEV 13	Rwy 13L Idg 9095'
	Rwy 13R Idg 11966'
	Rwy 22R Idg 8655'
	Rwy 31L Idg 11248'
	Rwy 31R Idg 8970'



TDZ/CL Rwys 4R, 13L, 31R and 22L
REIL Rwy 4L
HIRL Rwys 4L-22R,
4R-22L, 13R-31L, and 13L-31R

CATEGORY	A	B	C	D
LPV DA		270/24	257 (300-½)	
LNAV/VNAV DA		420/50	407 (500-1)	
LNAV MDA	560/24	547 (600-½)	560/50 547 (600-1)	560/60 547 (600-1½)
CIRCLING	640-1½	627 (700-1½)	640-1½ 627 (700-1½)	640-2 627 (700-2)

NEW YORK / JOHN F. KENNEDY INTL (JFK)

Amdt 1 08045

40°38'N - 73°47'W

RNAV (GPS) RWY 22L

NE-2, 08 MAY 2008 to 05 JUN 2008

NE-2. 08 MAY 2008 to 05 JUN 2008