

LOC/DME 1-HWY 110.9 Chan 46	APP CRS 225°	Rwy Idg 8400 TDZE 13 Apt Elev 13
---	------------------------	---

ILS RWY 22L (CAT III)
NEW YORK/JOHN F. KENNEDY INTL (JFK)



MISSED APPROACH: Climb to 500 then climbing left turn to 3000 via JFK R-190 to CHANT Int/19 DME and hold.

	ARR	ATIS (NE)	(SW)	NEW YORK APP CON		KENNEDY TOWER		GND CON		CLNC DEL
				127.4	269.0	Rwys 4R/22L and 13L/31R	119.1 281.55	121.9	348.6	135.05
						Rwys 4L/22R and 13R/31L	123.9 281.55			
	DEP									
	115.1									

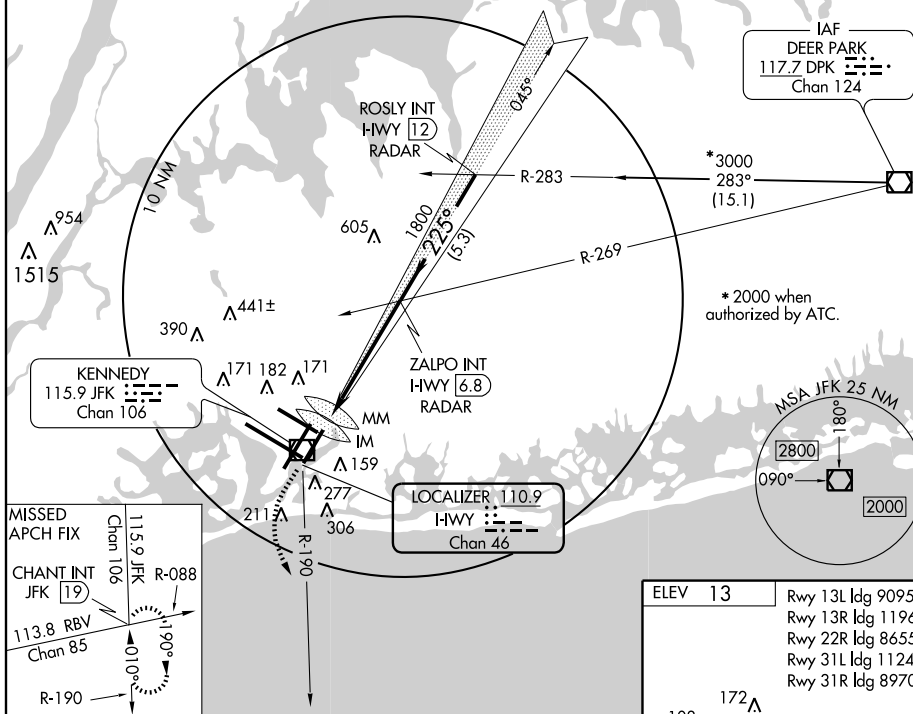


Diagram illustrating the S-ILS 22L approach procedure. The diagram shows a 13 MSL glide slope starting from the runway threshold. Key altitudes include 500, 3000, 117, 248, 1800, and 3000*. The approach is divided into segments A, B, and C. Segment A is 959' and 975' long. Segment B is 2495' long. Segment C is 4.8 NM long. The final segment is 5.3 NM long. The approach is authorized by ATC. The diagram also shows the ZALPO INT I-HWY 6.8 RADAR and ROSLY INT I-HWY 12 RADAR. The approach is for S-ILS 22L, CAT IIIA, RVR 07.

CATEGORY	A	B	C	D
S-ILS 22L		CAT IIIA	RVR 07	
S-ILS 22L		CAT IIIB	RVR 06	
S-ILS 22L		CAT IIIC	NA	

CATEGORY III ILS - SPECIAL AIRCREW
& AIRCRAFT CERTIFICATION REQUIRED

REIL Rwy 4L
HIRL Rwy 4L-22R,
4R-22L, 13R-31L, and 13L-31R
TDZ/CL Rwy 4R, 13L, 31R and 22L