

NEW YORK, NEW YORK

AL-610 (FAA)

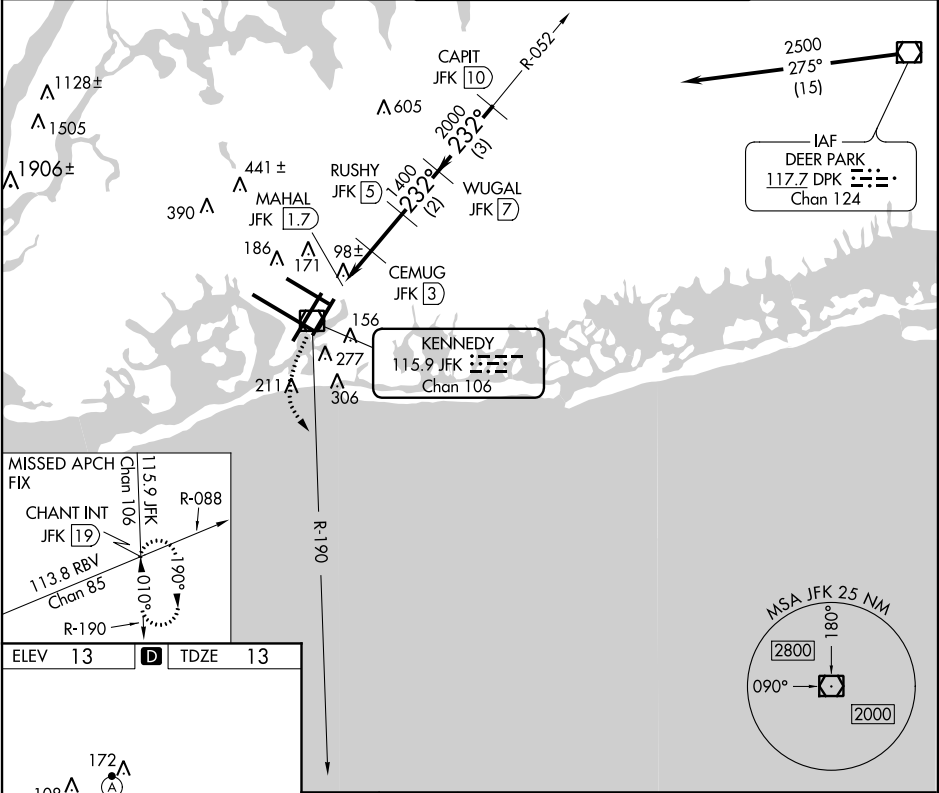
VOR/DME JFK	APP CRS	Rwy Idg	8400
115.9	232°	TDZE	13
Chan 106		Apt Elev	13

# VOR/DME RWY 22L

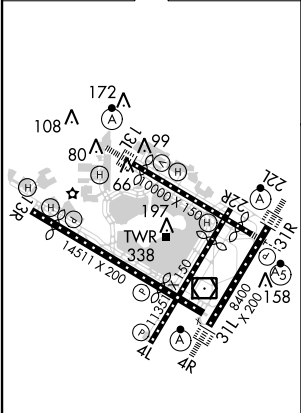
NEW YORK / JOHN F. KENNEDY INTL (JFK)

	ALSIF-2 	MISSED APPROACH: Climbing left turn to 3000 via JFK R-190 to CHANT INT/19 DME and hold.
--	-------------	--

ATIS (ARR-NE)	(ARR-SW)	NEW YORK APP CON	KENNEDY TOWER Rwys 4R/22L and 13L/31R	119.1	281.55	GND CON	CLNC DEL
128.725	117.7	115.4	127.4	269.0		121.9	135.05
			Rwys 4L/22R and 13R/31L	123.9	281.55	348.6	348.6



ELEV 13	<b>D</b>	TDZE 13
---------	----------	---------



RLS Rwy 13R
HIRL all Rwys
TDZ/CL Rwys 4R, 13L, 31R and 22L

3000	CHANT INT	CEMUG JFK [3]	RUSHY JFK [5]	WUGAL JFK [7]	CAPIT JFK [10]
JFK R-190					
VOR/DME	MAHAL JFK [1.7]	JFK [2.4]			
		600	1400	2000	2500
		3.14°			
		TCH 69			
	0.6	0.7	0.6	2 NM	2 NM
CATEGORY	A	B	C	D	
S-22L	440/24	427 (500-½)	440/40	440/50	
			427 (500-¾)	427 (500-1)	
CIRCLING	640-1	627 (700-1)	640-1¾	640-2	
			627 (700-1¾)	627 (700-2)	

NEW YORK, NEW YORK  
Amdt 4D 13066

NEW YORK / JOHN F. KENNEDY INTL (JFK)

40°38'N-73°47'W

# VOR/DME RWY 22L

NE-2, 02 MAY 2013 to 30 MAY 2013

NE-2, 02 MAY 2013 to 30 MAY 2013