

APP CRS	Rwy Idg	<b>8400</b>
<b>225°</b>	TDZE	<b>13</b>
	Apt Elev	<b>13</b>

# RNAV (RNP) Z RWY 22L

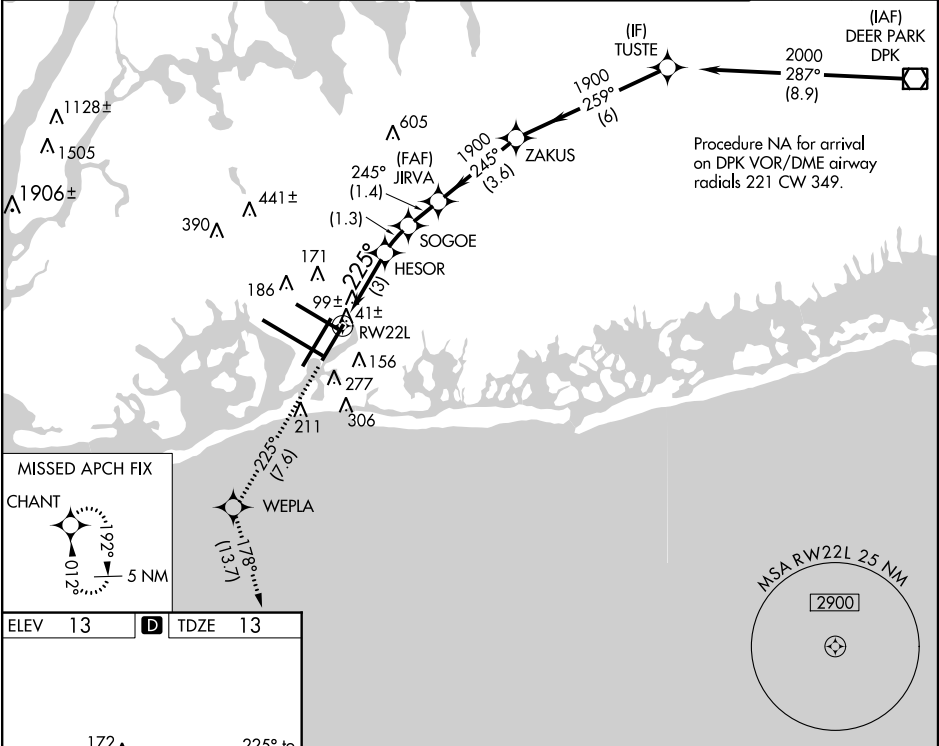
NEW YORK / JOHN F. KENNEDY INTL (JFK)

**NA** For uncompensated Baro-VNAV systems, procedure NA below -13°C (8°F) or above 49°C (120°F). RF and GPS Required. For inoperative ALSF, increase RNP 0.20 DA visibility to RVR 5000 all Cats, RNP 0.30 DA visibility to RVR 6000 all Cats. Visibility reduction by helicopters NA. Simultaneous approach authorized with ILS Rwy 22R. Use of FD or AP providing RNAV track guidance required during simultaneous operations.

**ALSF-2**

**MISSED APPROACH:** Climb to 3000 via 225° track to WEPLA and via 178° track to CHANT and hold.

ATIS (ARR-NE)	(ARR-SW)	NEW YORK APP CON	KENNEDY TOWER	GND CON	CLNC DEL
<b>128.725</b>	<b>117.7</b>	<b>115.4</b>	Rwys 4R/22L and 13L/31R <b>119.1</b> Rwys 4L/22R and 13R/31L <b>123.9</b>	<b>121.9</b> <b>281.55</b> <b>348.6</b>	<b>135.05</b> <b>281.55</b> <b>348.6</b>



**ELEV 13** **TDZE 13**

**MISSD APCH FIX**  
CHANT

**MSA RW22L 25 NM**  
2900

**3000** **tr 225°** **WEPLA** **tr 178°** **CHANT**

**VGSI and RNAV glidepath not coincident (VGSI Angle 3.00/TCH 66).**

**JIRVA** **ZAKUS** **TUSTE**  
**1900** **259°** **2000**

**Procedure Turn NA**  
**GP 3.00°**  
**TCH 50**

**3 NM** **1.3 NM** **1.4 NM** **3.6 NM** **6 NM**

CATEGORY	A	B	C	D
RNP 0.20 DA	339/40 326 (400-¾)			
RNP 0.30 DA	408/50 395 (400-1)			

**RLS Rwy 13R**  
**HIRL all Rws**  
**TDZ/CL Rws 4R, 13L, 31R and 22L**