

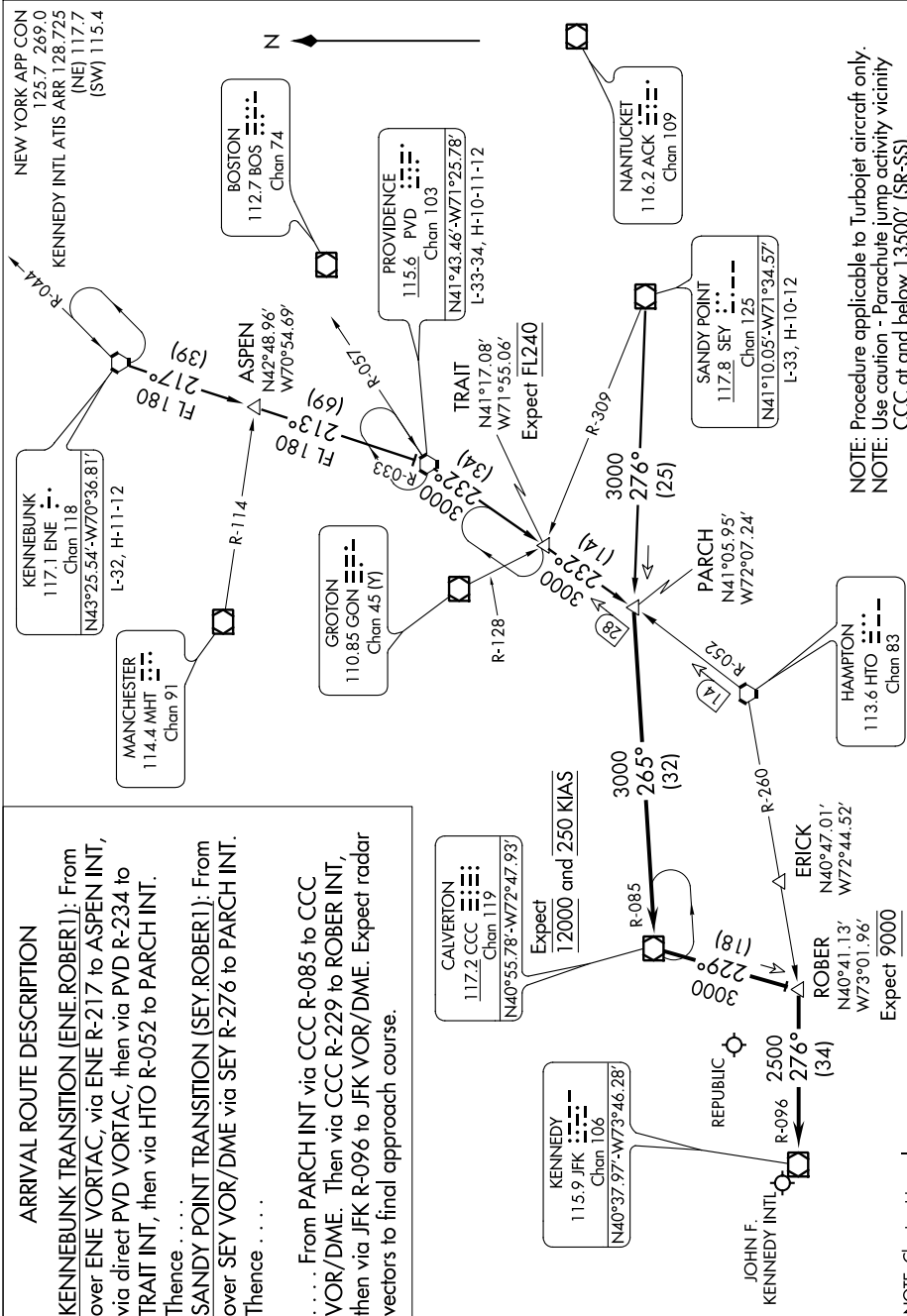
ARRIVAL ROUTE DESCRIPTION

KENNEBUNK TRANSITION (ENE.ROBER1): From over ENE VORTAC, via ENE R-217 to ASPEN INT, via direct PVD VORTAC, then via PVD R-234 to TRAIT INT, then via HTO R-052 to PARCH INT.

Thence

SANDY POINT TRANSITION (SEY.ROBER1): From
over SEY VOR/DME via SEY R-276 to PARCH INT.
Thence

..... From PARCH INT via CCC R-085 to CCC VOR/DME. Then via CCC R-229 to ROBER INT, then via JFK R-096 to JFK VOR/DME. Expect radar vectors to final approach course.



NOTE: Procedure applicable to Turbojet aircraft only.
NOTE: Use caution - Parachute jump activity vicinity CCC at and below 13500' (SR-SS).

NOTE: Chart not to scale.